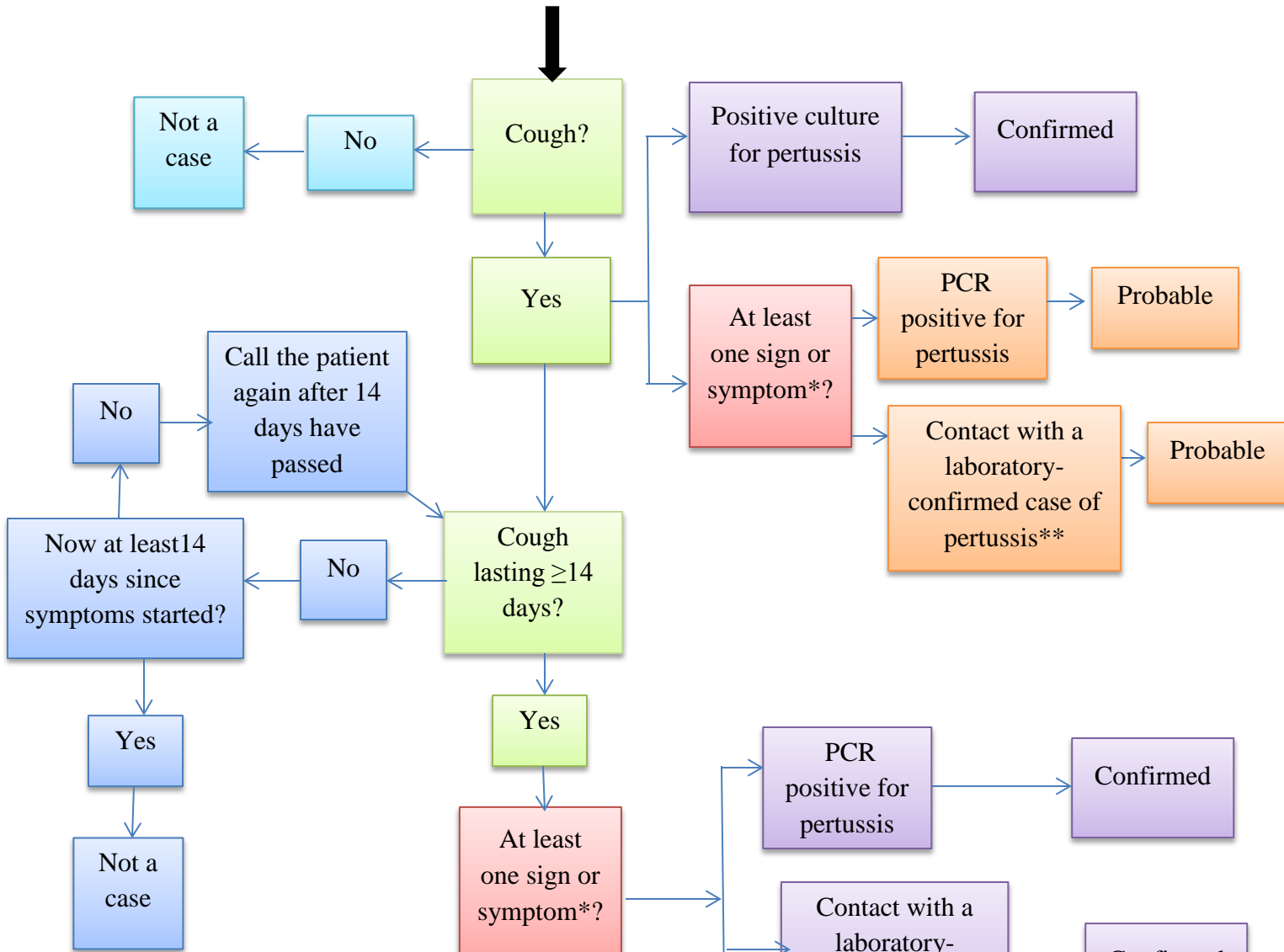


Pertussis Case Ascertainment For Infants LESS THAN ONE YEAR OF AGE



Signs and Symptoms*:

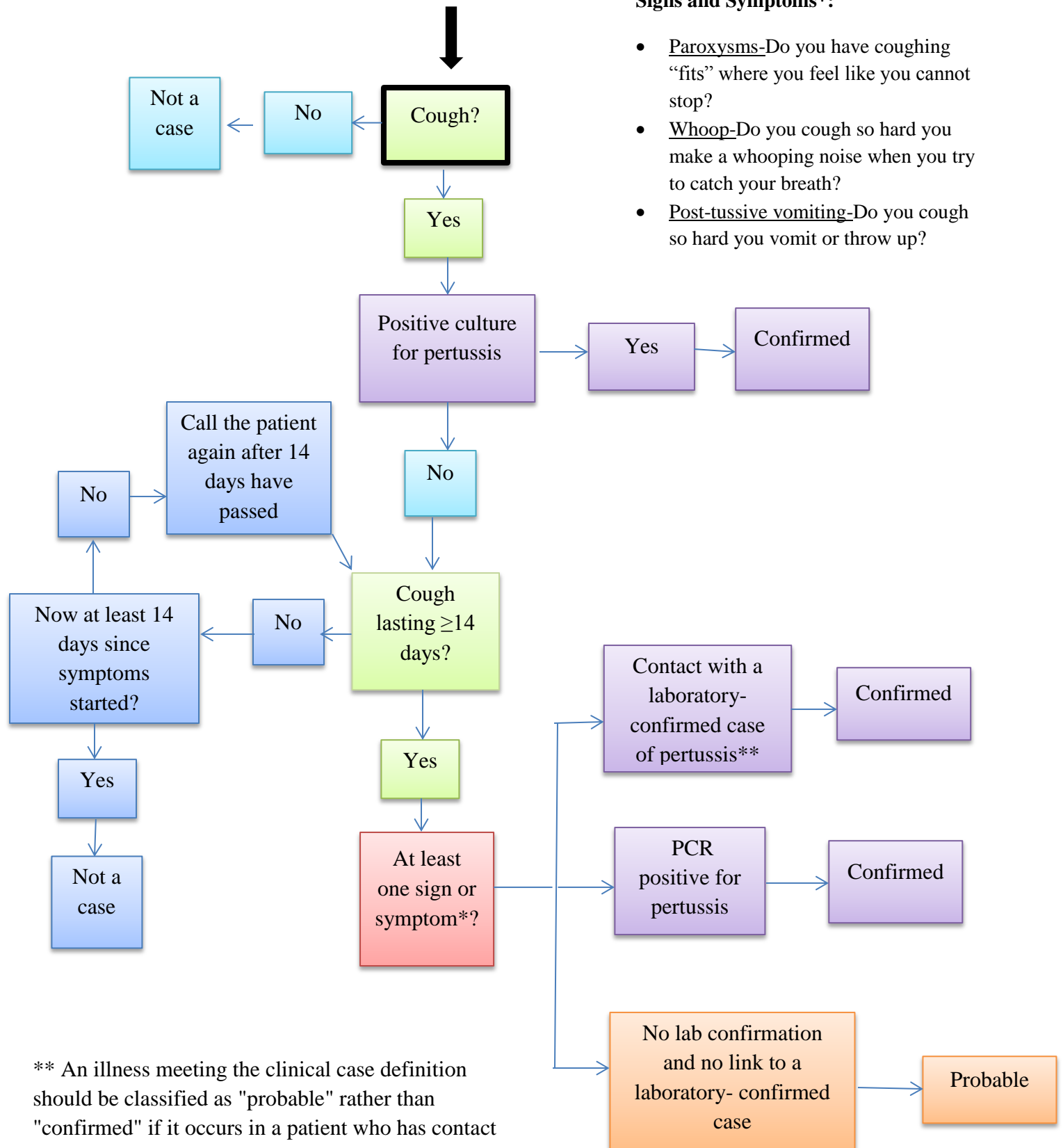
- Paroxysms-Do you have coughing “fits” where you feel like you cannot stop?
 - Whoop-Do you cough so hard you make a whooping noise when you try to catch your breath?
 - Post-tussive vomiting-Do you cough so hard you vomit or throw up?
- For infants <1:
- Apnea-Has your baby stopped breathing?
 - Apnea with cyanosis-Has your baby stopped breathing and turned blue?

** An illness meeting the clinical case definition should be classified as "probable" rather than "confirmed" if it occurs in a patient who has contact with an infant aged <1 year who is PCR positive for pertussis and has ≥1 sign or symptom and cough duration <14 days (classified as "probable" case).

Pertussis Case Ascertainment For Patients ONE YEAR OF AGE, OR MORE

Signs and Symptoms*:

- Paroxysms-Do you have coughing "fits" where you feel like you cannot stop?
- Whoop-Do you cough so hard you make a whooping noise when you try to catch your breath?
- Post-tussive vomiting-Do you cough so hard you vomit or throw up?



** An illness meeting the clinical case definition should be classified as "probable" rather than "confirmed" if it occurs in a patient who has contact with an infant aged <1 year who is PCR positive for pertussis and has ≥ 1 sign or symptom and cough duration <14 days (classified as "probable" case).