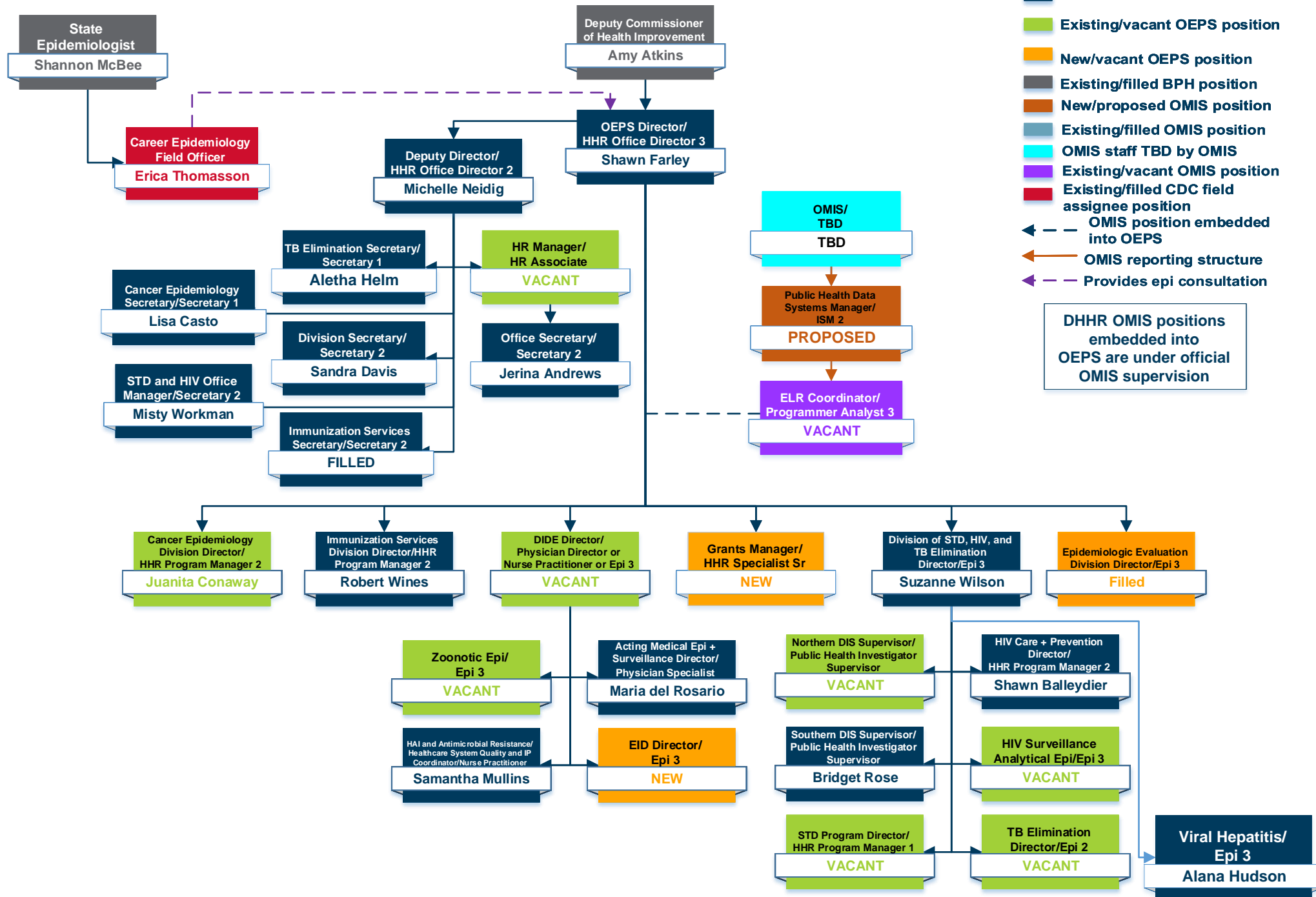
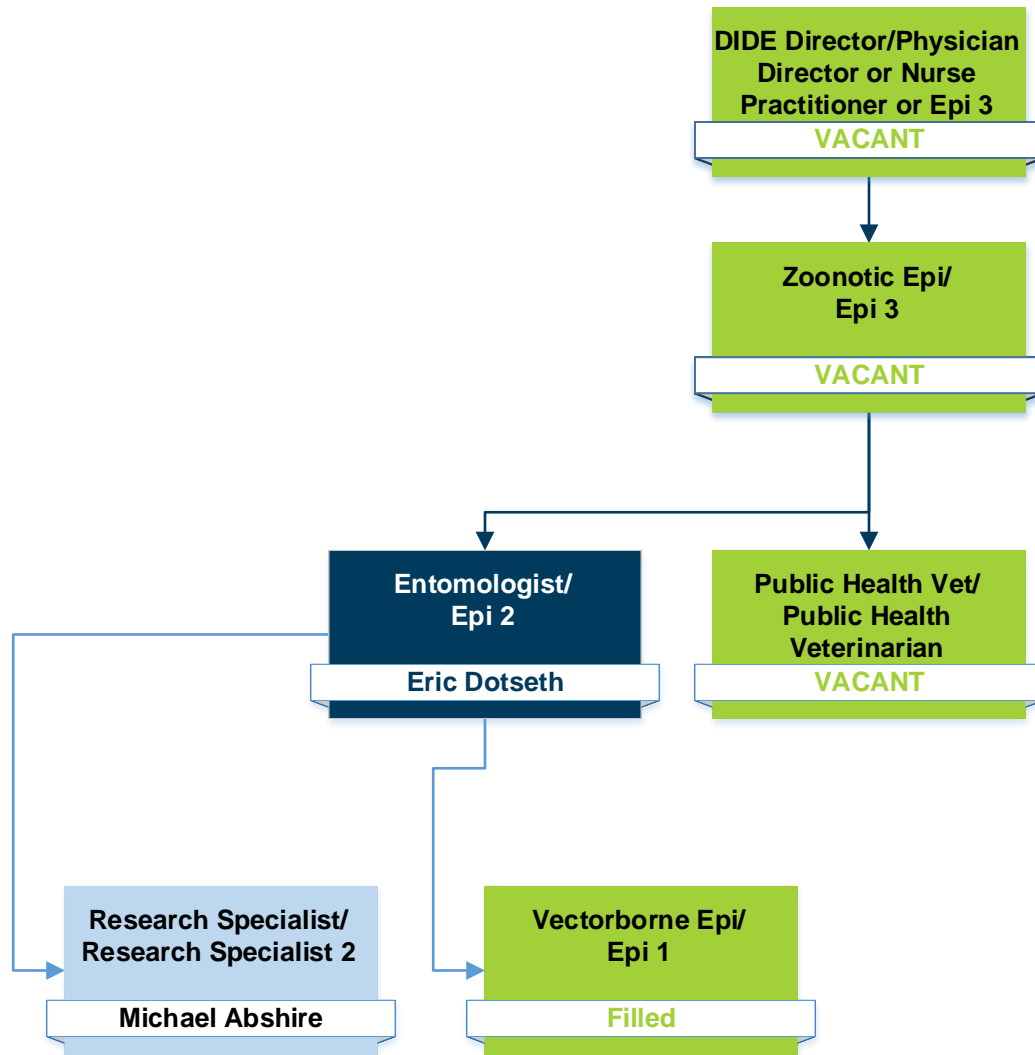


Office of Epidemiology Prevention Services (OEPS) Leadership and Direct Reports



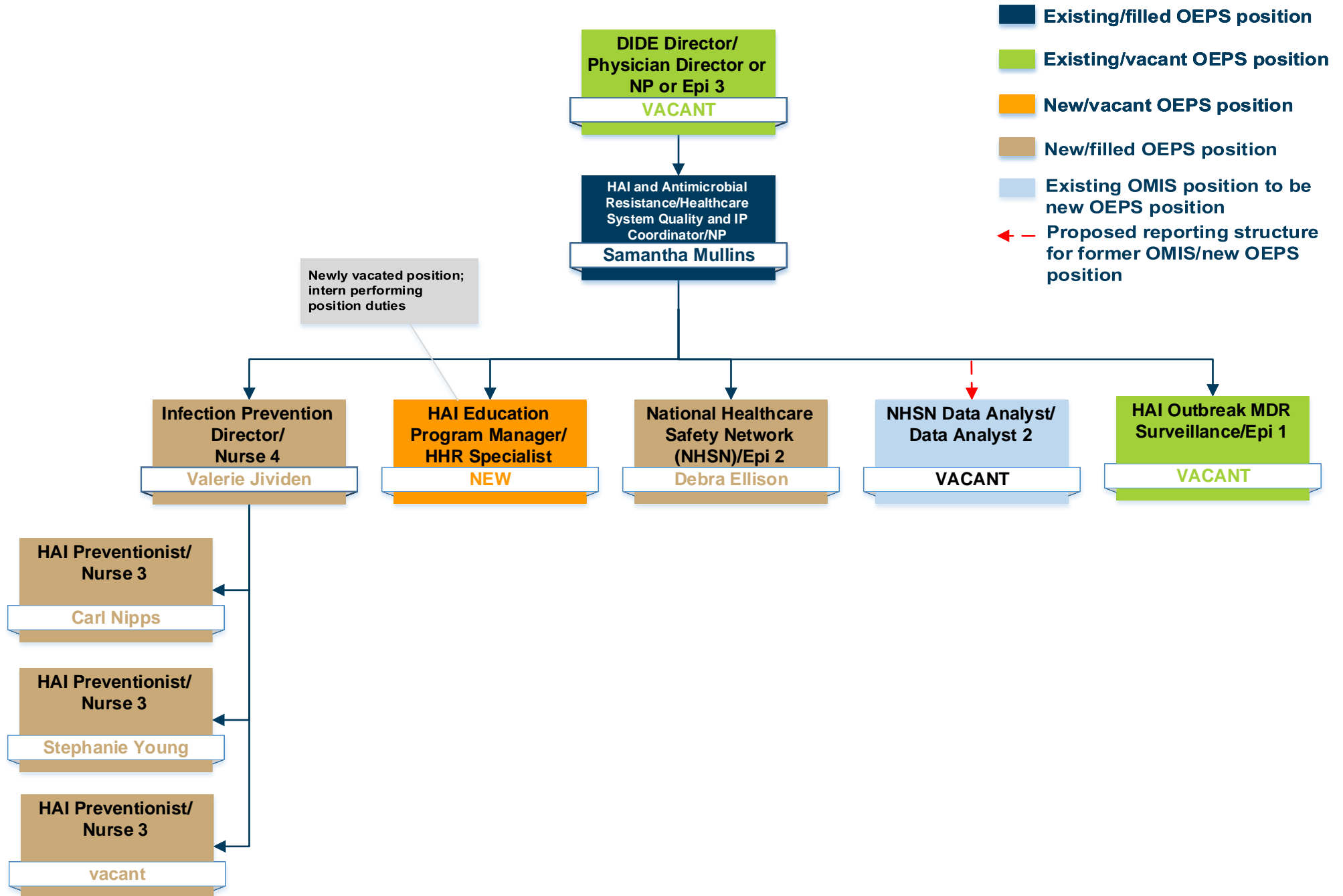
OEPS DIDE Zoonotic Disease Branch



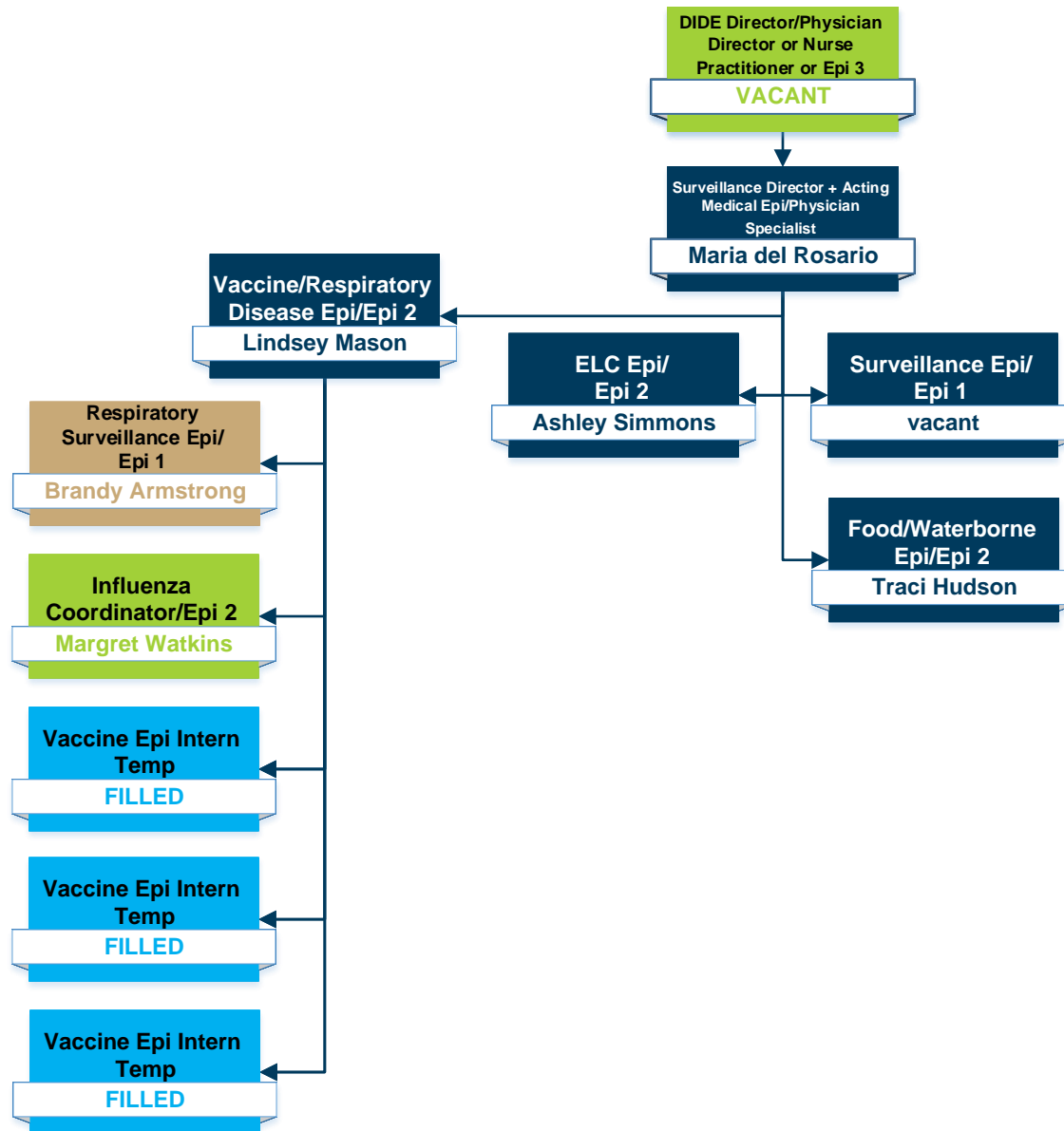
- Existing/filled OEPS position
- Existing/vacant OEPS position
- Existing OMIS position to be new OEPS position
- New/vacant OEPS position
- Proposed reporting structure for former OMIS/new OEPS position

OEPS DIDE

Healthcare-Associated Infection (HAI) Branch

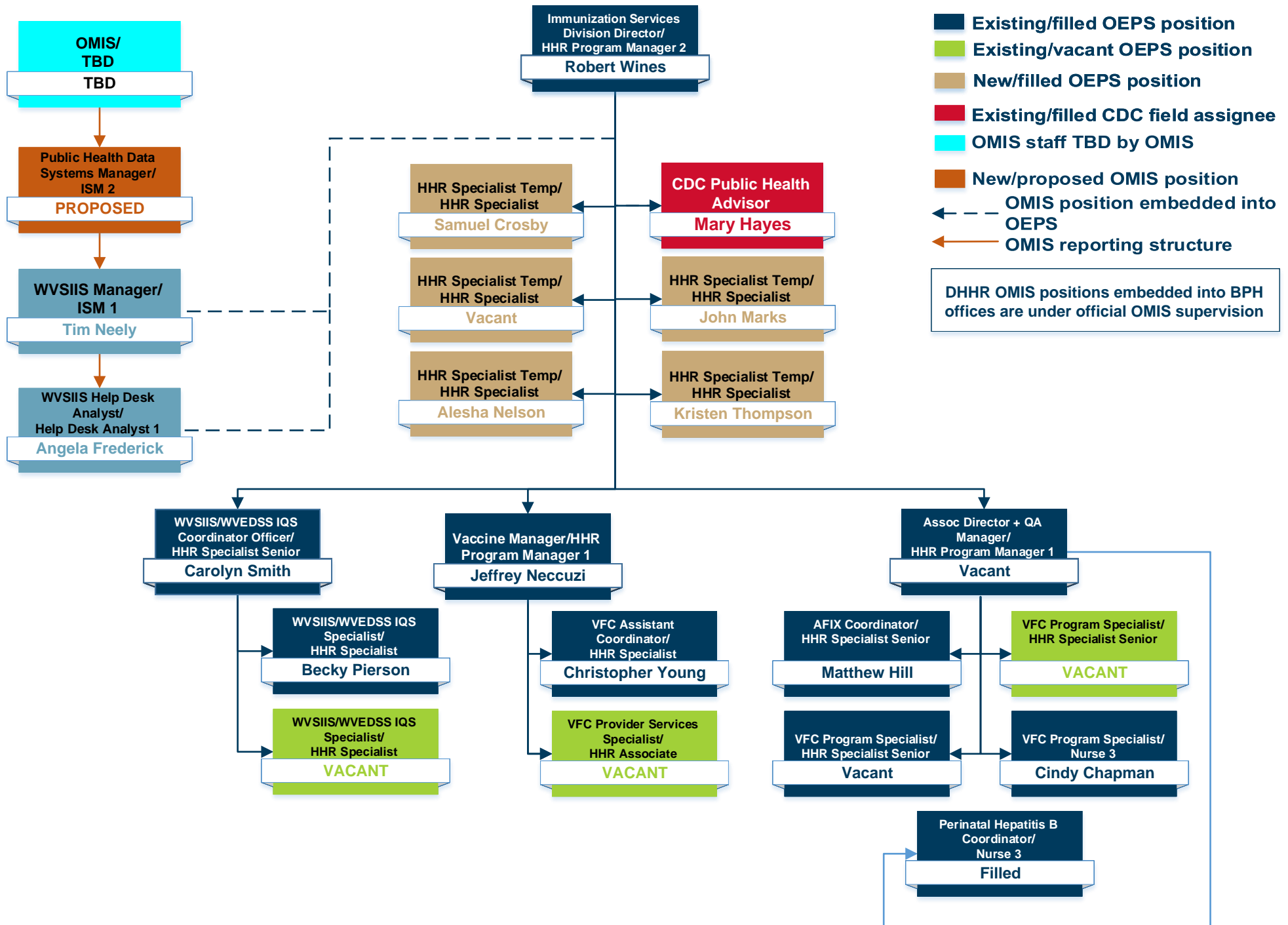


OEPS DIDE Surveillance Branch

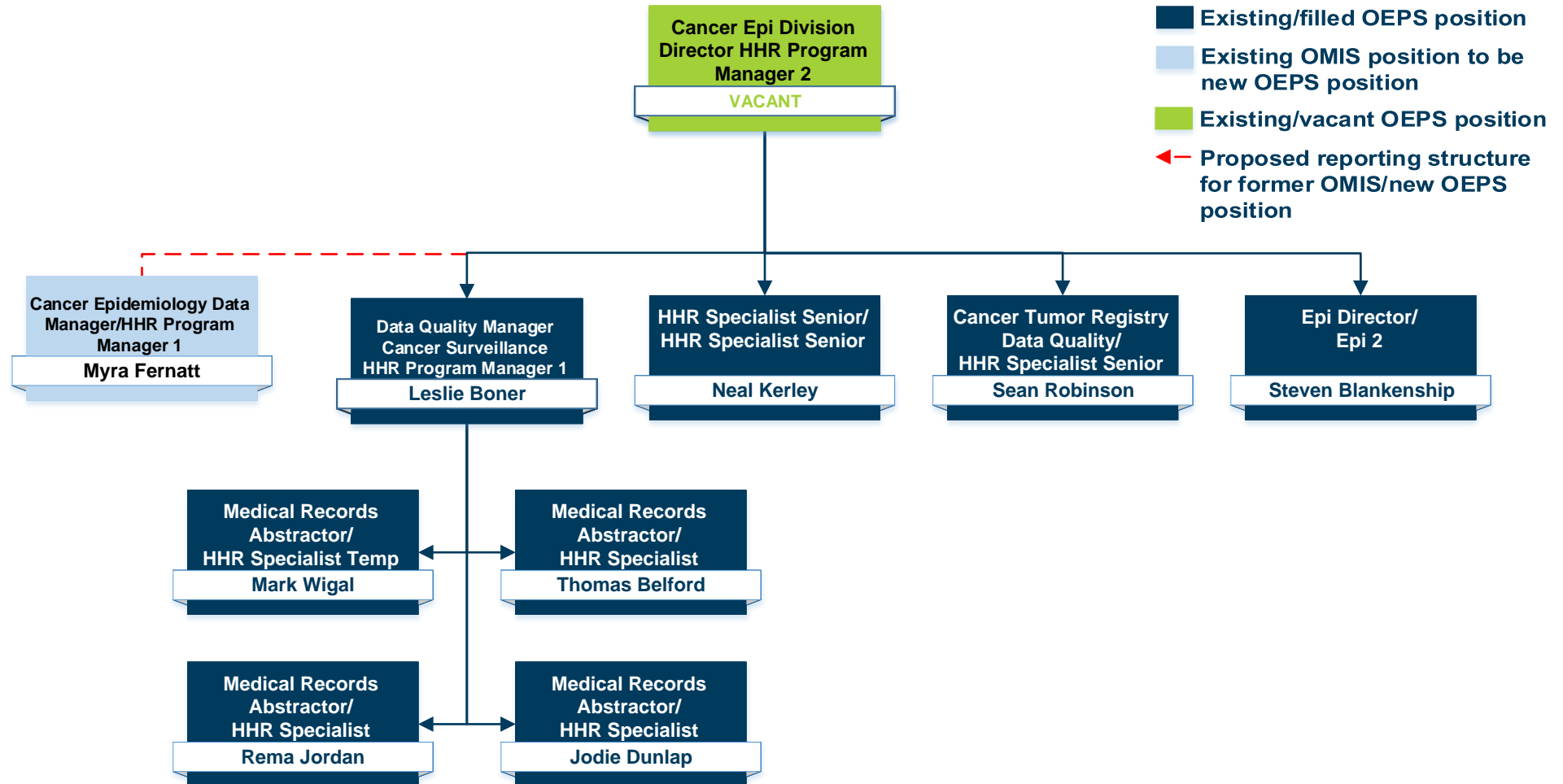


- Existing/filled OEPS position
- Existing/vacant OEPS position
- New/vacant OEPS position
- New/filled OEPS position
- New/filled OEPS intern position

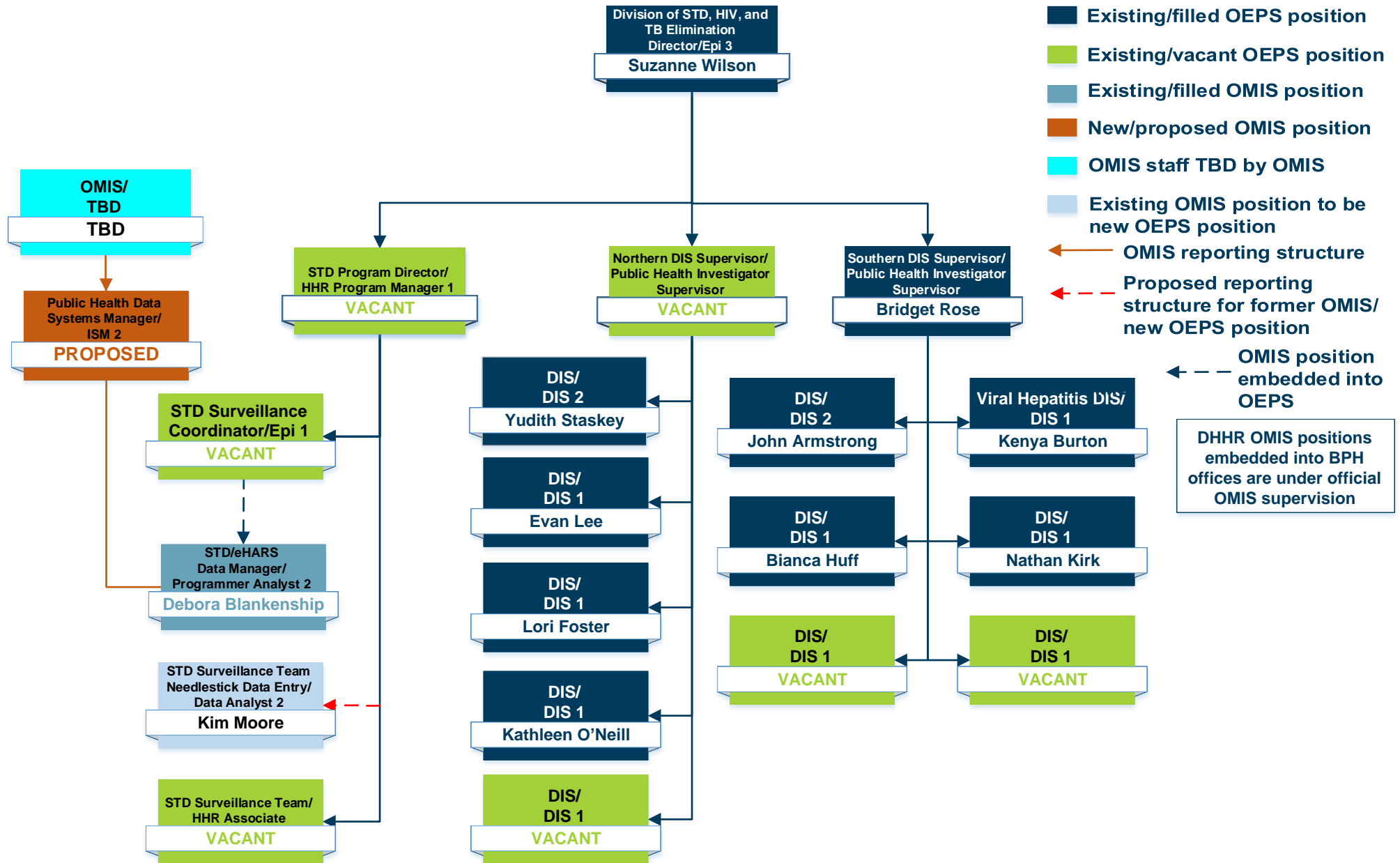
OEPS Division of Immunization Services



OEPS Division of Cancer Epidemiology

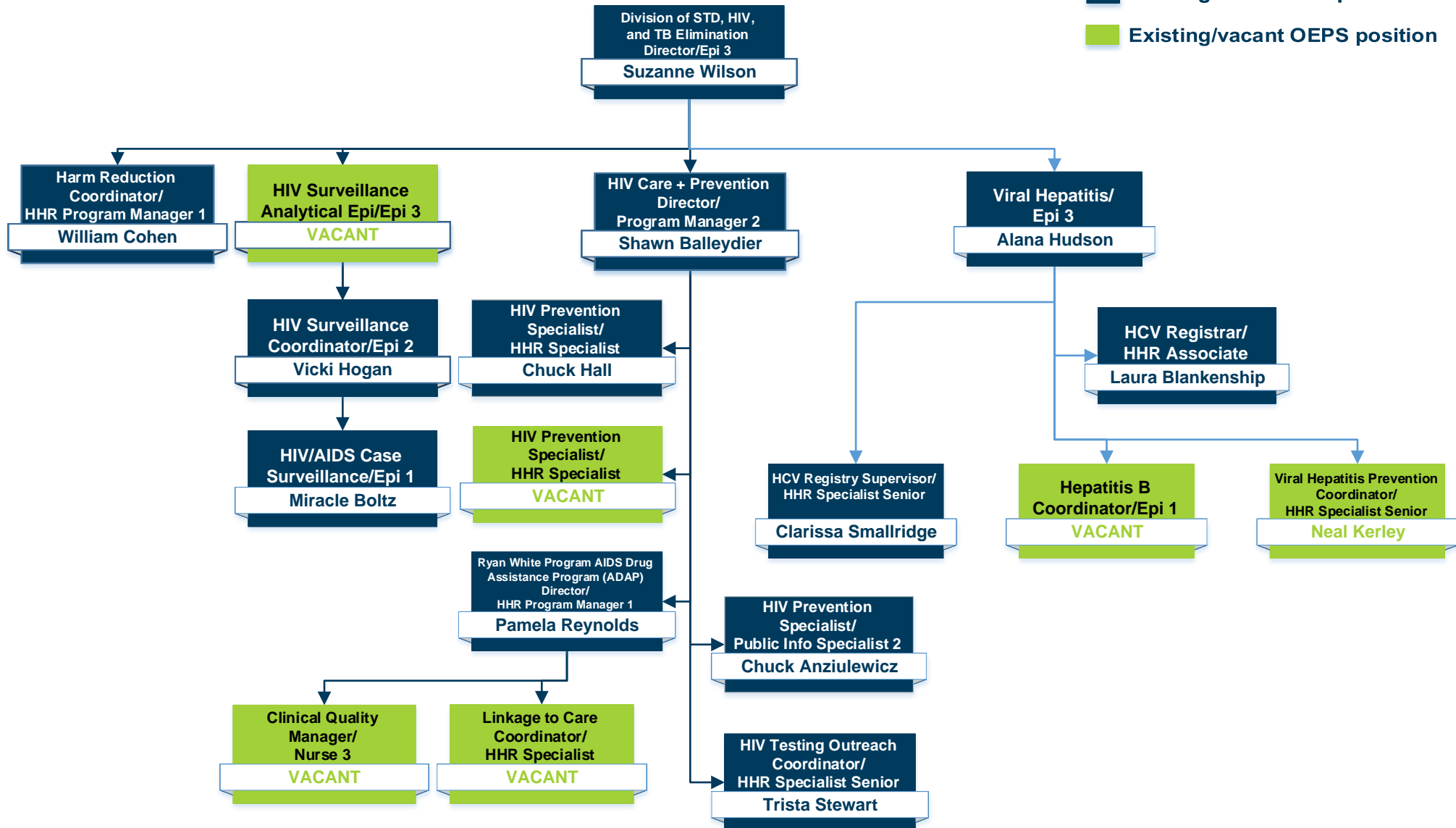


OEPS Division of STD, HIV, and TB Elimination STD Branch

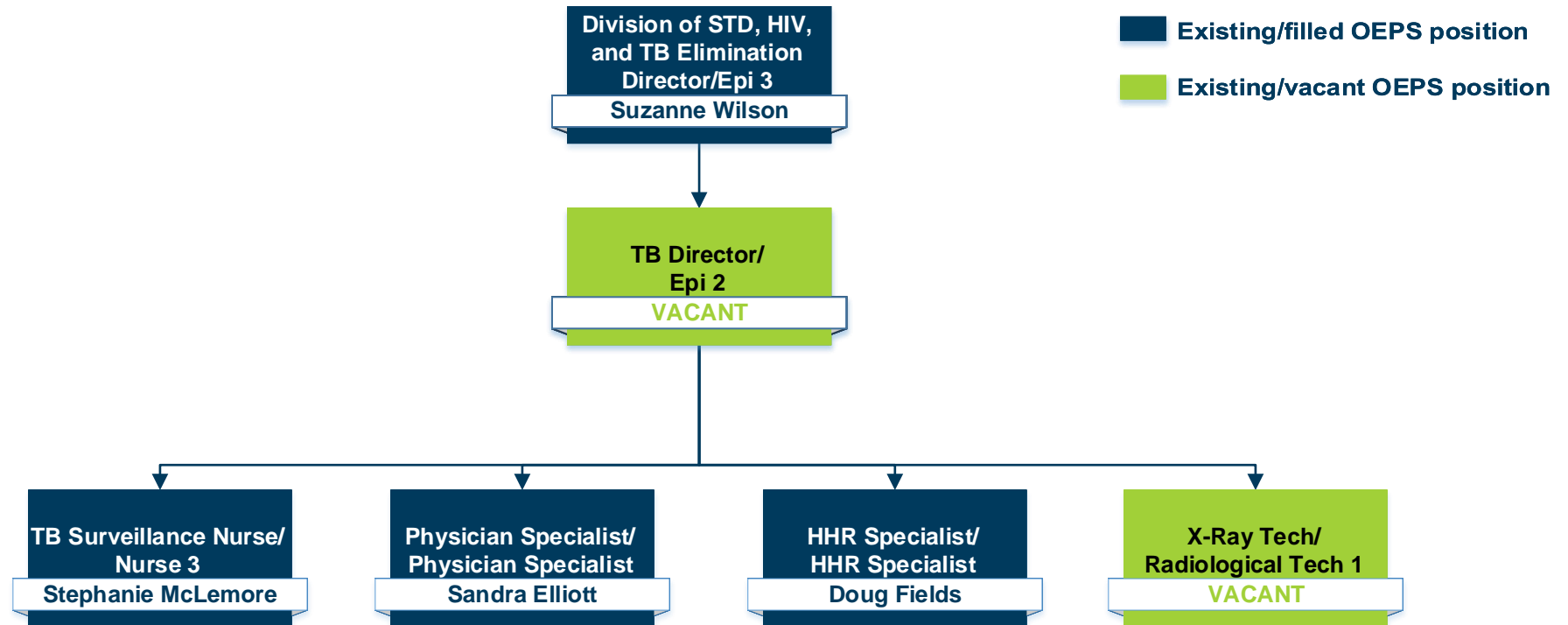


OEPS Division of STD, HIV, and TB Elimination HIV Branch

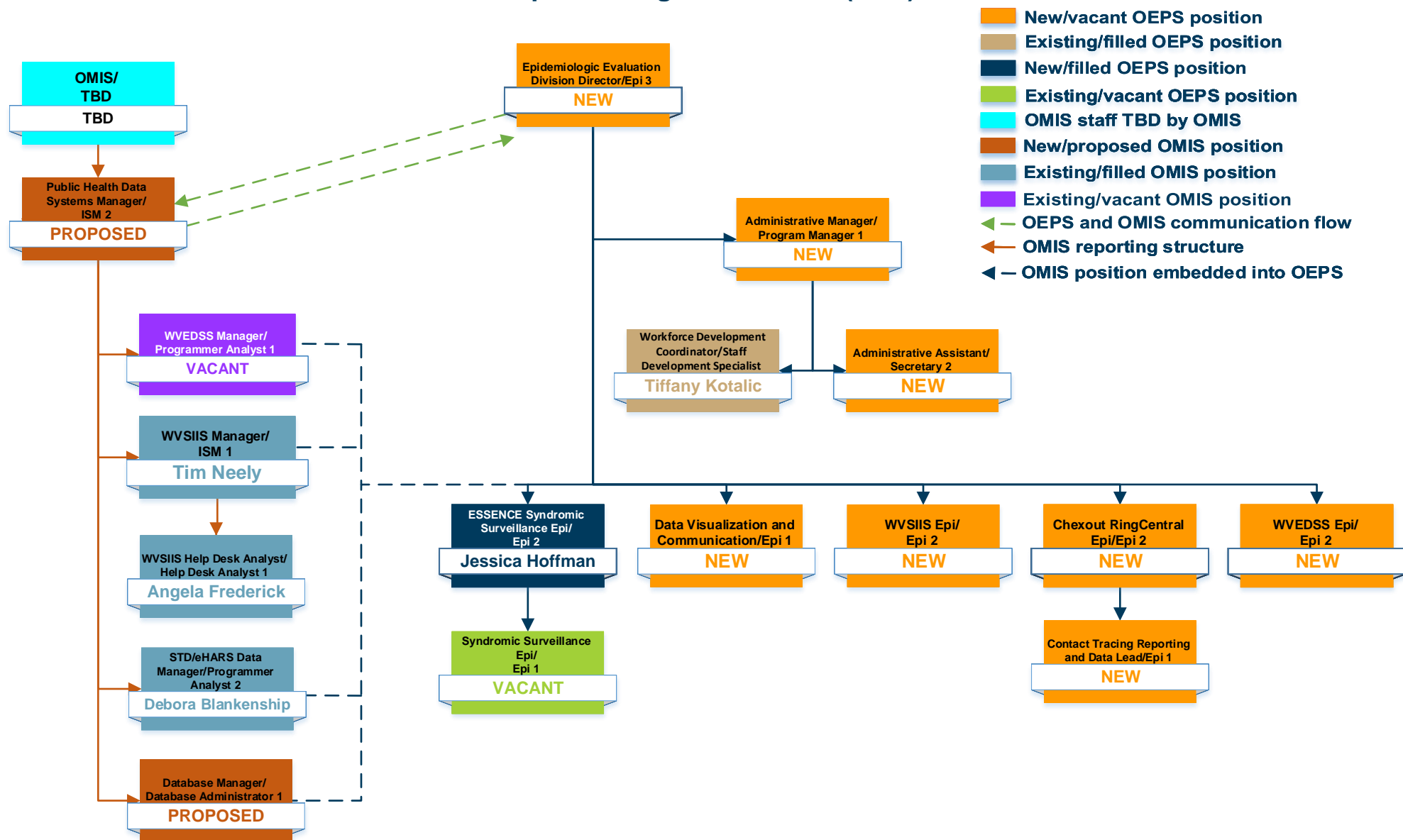
Existing/filled OEPS position
Existing/vacant OEPS position



OEPS Division of STD, HIV, and TB Elimination TB Elimination Branch



OEPS Division of Epidemiologic Evaluation (DEE)



DHHR Office of Management Information Services (OMIS)

