

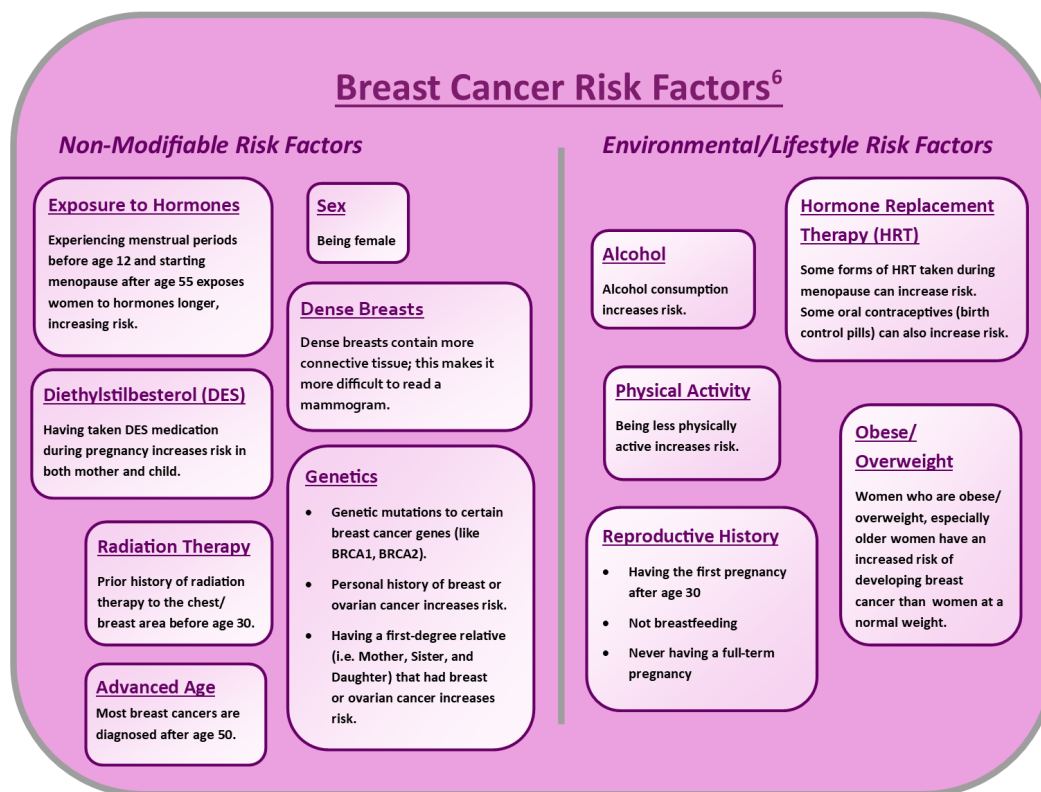
# Female Breast Cancer in West Virginia



Breast cancer is the most commonly diagnosed cancer and the second most common cancer-related cause of death among women in WV and the US.<sup>1</sup> Although it is rare, men are also susceptible to breast cancer.<sup>2</sup> On average, approximately 1,536 women were diagnosed with breast cancer, while about 290 women died of the disease in WV between 2015-2019.<sup>1</sup> Breast cancer rates vary slightly between white and black West Virginia women: both groups are equally likely to be diagnosed with breast cancer, but Black West Virginia women are more likely to die from the disease.<sup>1</sup> Breast cancer is more common in women ages 65-69 years old in WV than any other age group.<sup>3</sup>

Over half (56%) of women with breast cancer in WV were diagnosed with localized breast cancer, while 21% and 6% were diagnosed with regional and distant breast cancer, respectively.<sup>3</sup> As with other cancers, the earlier breast cancer is detected, the better the chance of survival. Currently, the best way to detect breast cancer when it is still in its early stages, and, thus, more easily treatable, is through yearly or biennial mammograms.<sup>4</sup> As of April 2023, the U.S. Preventive Services Task Force recommends biennial screening starting at age 40 or 45, and cessation at age 74 or 79.<sup>5</sup>

There are several factors that can influence a person's chance of developing breast cancer. Some of these risk factors are shown below:

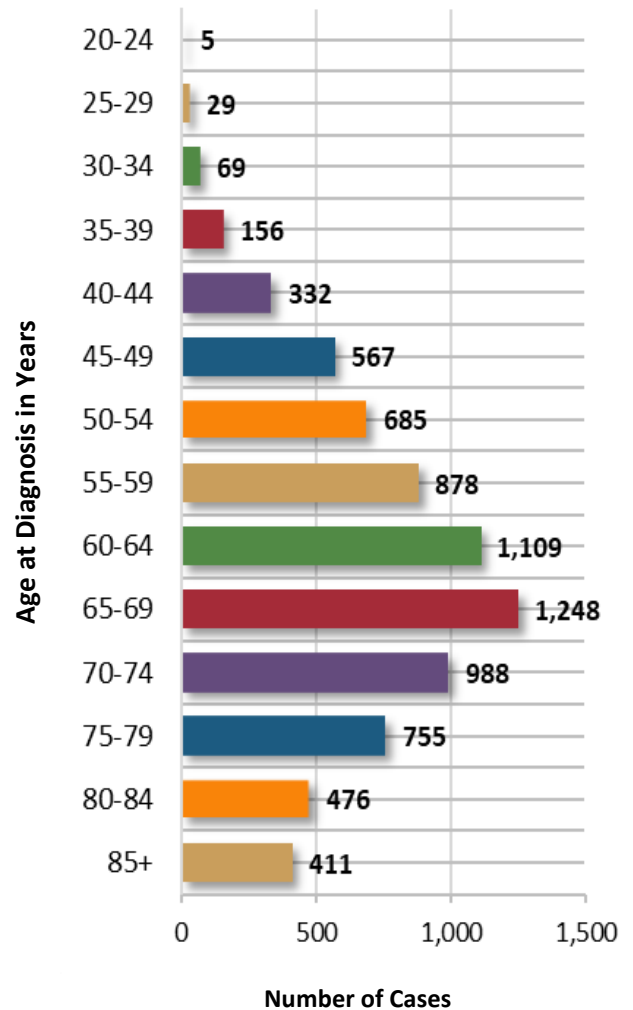


- 1) U.S. Cancer Statistics Working Group. U.S. Cancer Statistics Data Visualizations Tool, based on 2021 submission data (1999-2019): U.S. Department of Health and Human Services, Centers for Disease Control and Prevention and National Cancer Institute; [www.cdc.gov/cancer/dataviz](http://www.cdc.gov/cancer/dataviz), released in June 2022.
- 2) American Cancer Society. Accessed at <http://www.cancer.org/cancer/breastcancer/detailedguide/breast-cancer-what-is-breast-cancer> on 8/31/2022 at 1:00 PM.
- 3) West Virginia Cancer Registry
- 4) Centers for Disease Control and Prevention. Accessed at [https://www.cdc.gov/cancer/breast/basic\\_info/screening.htm](https://www.cdc.gov/cancer/breast/basic_info/screening.htm) on 8/31/2022 at 9:15 PM
- 5) U.S. Preventive Services Task Force. Accessed at <https://www.uspreventiveservicestaskforce.org/uspstf/document/draft-modeling-report/breast-cancer-screening-adults> on 5/30/2023 at 3:10 PM
- 6) Centers for Disease Control and Prevention. Accessed at [https://www.cdc.gov/cancer/breast/basic\\_info/risk\\_factors.htm](https://www.cdc.gov/cancer/breast/basic_info/risk_factors.htm) on 8/31/2022 at 9:30 AM

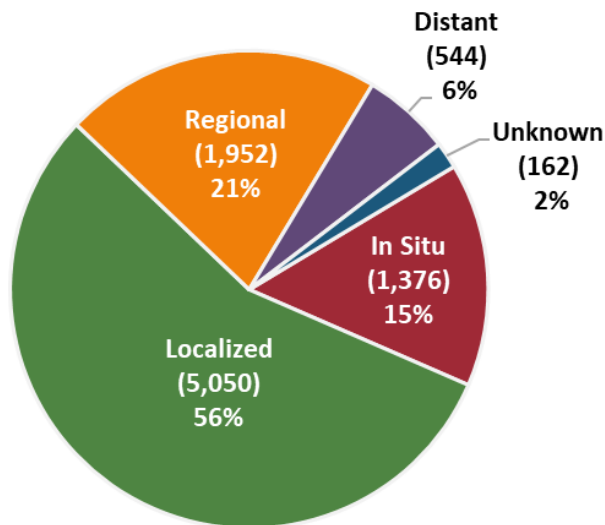
Female Breast Cancer Incidence and Mortality Rate (per 100,000) and Counts, West Virginia, 2015-2019

	Incidence		Mortality	
	Rate	Cases	Rate	Deaths
Females	121.7	7,684	21.6	1,451

Female Breast Cancer Incidence Counts by Age Group, West Virginia 2015-2019



Percentage of Female Breast Cancer Cases by Stage at Diagnosis, West Virginia, 2015-2019



Average Annual Age-Adjusted Female Breast Cancer Incidence Rates by County, West Virginia, 2015-2019

