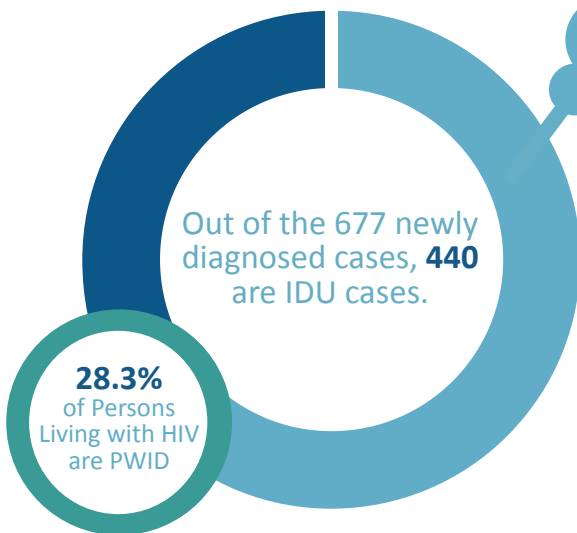


HIV Among Persons Who Inject Drugs (PWID) in WV

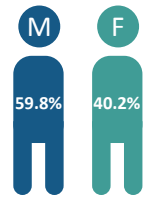
2018 - 2022

Since 2018, persons reporting injection drug use (IDU) experience higher rates of newly diagnosed Human Immunodeficiency Virus (HIV) in West Virginia than other transmission risk categories.

65% of all newly diagnosed HIV cases in WV from 2018-2022 were PWID.

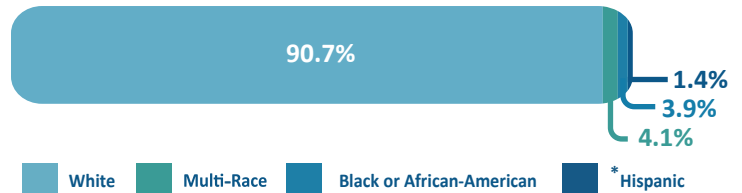


Sex At Birth:



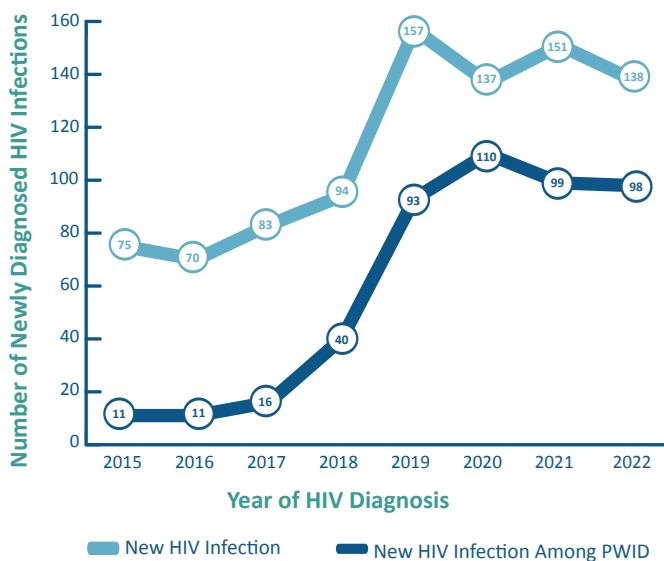
Out of the 440 IDU cases, **263** are confirmed as male at birth and **177** are confirmed as female at birth.

Race/Ethnicity:

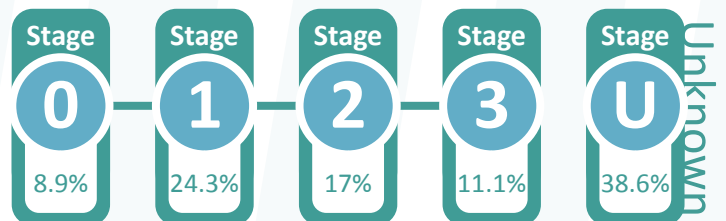


* Note: Data is low and considered unreliable, interpret with caution.

Newly Diagnosed HIV Infection Among PWID, 2015-2022

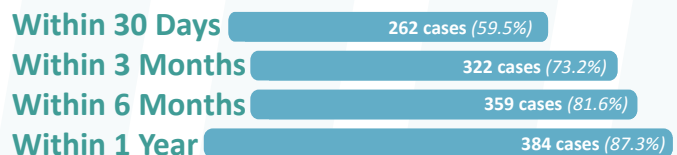


Stage Of Disease At Time Of HIV Diagnosis Among PWID, 2018-2022



* Note: Stage of disease at time of HIV diagnosis is based on the first CD4 test performed or documentation of an AIDS-defining condition \leq 3 months (\leq 91 days) after a diagnosis of HIV infection.

Linkage To HIV *Medical Care After HIV Diagnosis Among PWID, 2018-2022



* Note: Linkage to HIV medical care was measured by documentation \geq 1 CD4 or viral load or genotype test \leq 30, \leq 91, \leq 182, and \leq 365 days after HIV diagnosis.