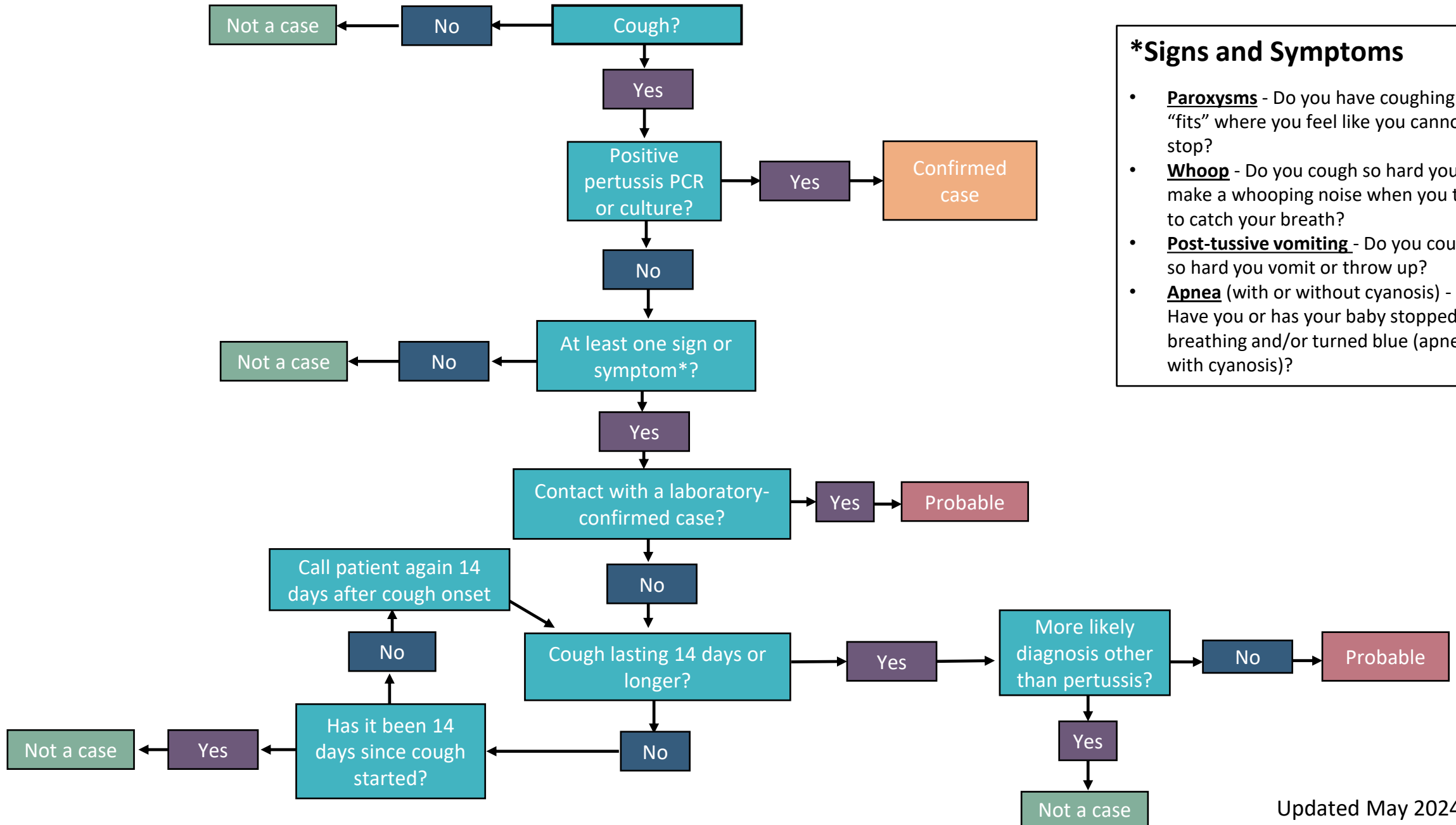


# Pertussis Case Ascertainment Algorithm



**\*Signs and Symptoms**

- **Paroxysms** - Do you have coughing “fits” where you feel like you cannot stop?
- **Whoop** - Do you cough so hard you make a whooping noise when you try to catch your breath?
- **Post-tussive vomiting** - Do you cough so hard you vomit or throw up?
- **Apnea** (with or without cyanosis) - Have you or has your baby stopped breathing and/or turned blue (apnea with cyanosis)?