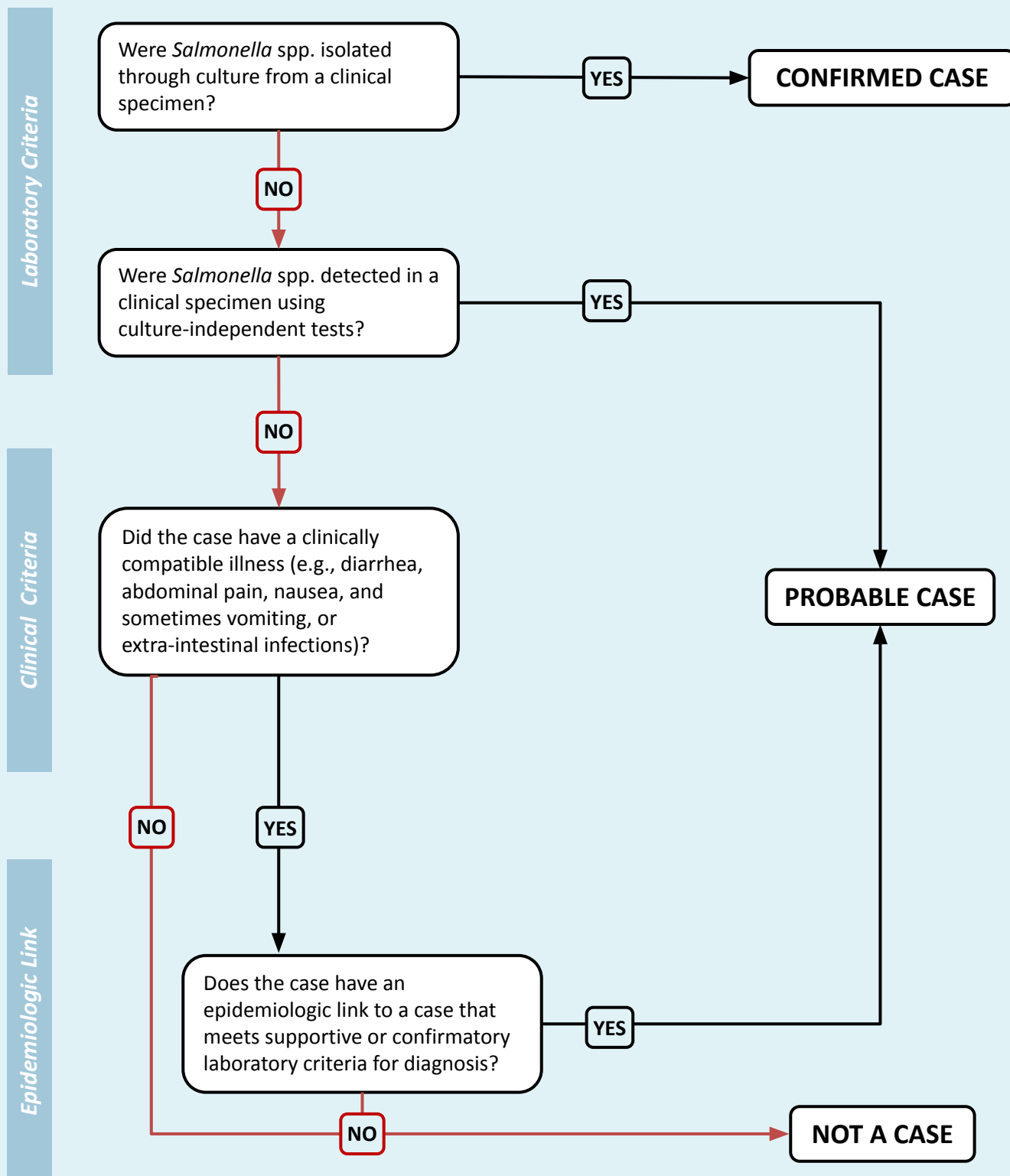


# Nontyphoidal Salmonellosis

## 2017 Case Definition Algorithm

### Case Classification



### Distinguishing a New Case from an Existing Case

A case should not be counted as a new case if the laboratory results were reported within 365 days of a previously reported infection in the same individual

When two or more different serotypes are identified from one or more specimens from the same individual, each should be reported as a separate case.