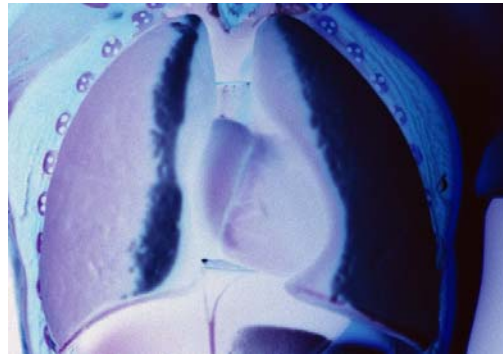


# 2011 West Virginia TB Profile



Office of Epidemiology & Prevention Services  
Division of TB Elimination



*Bureau for Public Health  
350 Capitol Street, Room 206  
Charleston, WV 25301*

*Earl Ray Tomblin, Governor  
Michael J. Lewis, M.D., Ph.D.,  
Cabinet Secretary*

**WV DIVISION OF TUBERCULOSIS ELIMINATION  
CONTACT INFORMATION**

**Telephone**

304-558-3669

**Toll-free in West Virginia**

1-800-330-8126

**Fax**

304-558-1825

**Website**

[www.dhhr.wv.gov/oeps/tuberculosis](http://www.dhhr.wv.gov/oeps/tuberculosis)

**Staff**

Dominic Gaziano, M.D.  
Medical Director

304-558-3669

Carmen Priddy, R.N., B.S.N.  
Program Director

304-558-3669

Libby Boggess, R.N.  
Surveillance Nurse

304-356-4003

Barbara Simpkins  
HHR Specialist

304-356-4058

Linda Winkel  
Secretary

304-558-3669

Joyce Brown  
Radiological Technologist

304-356-4002

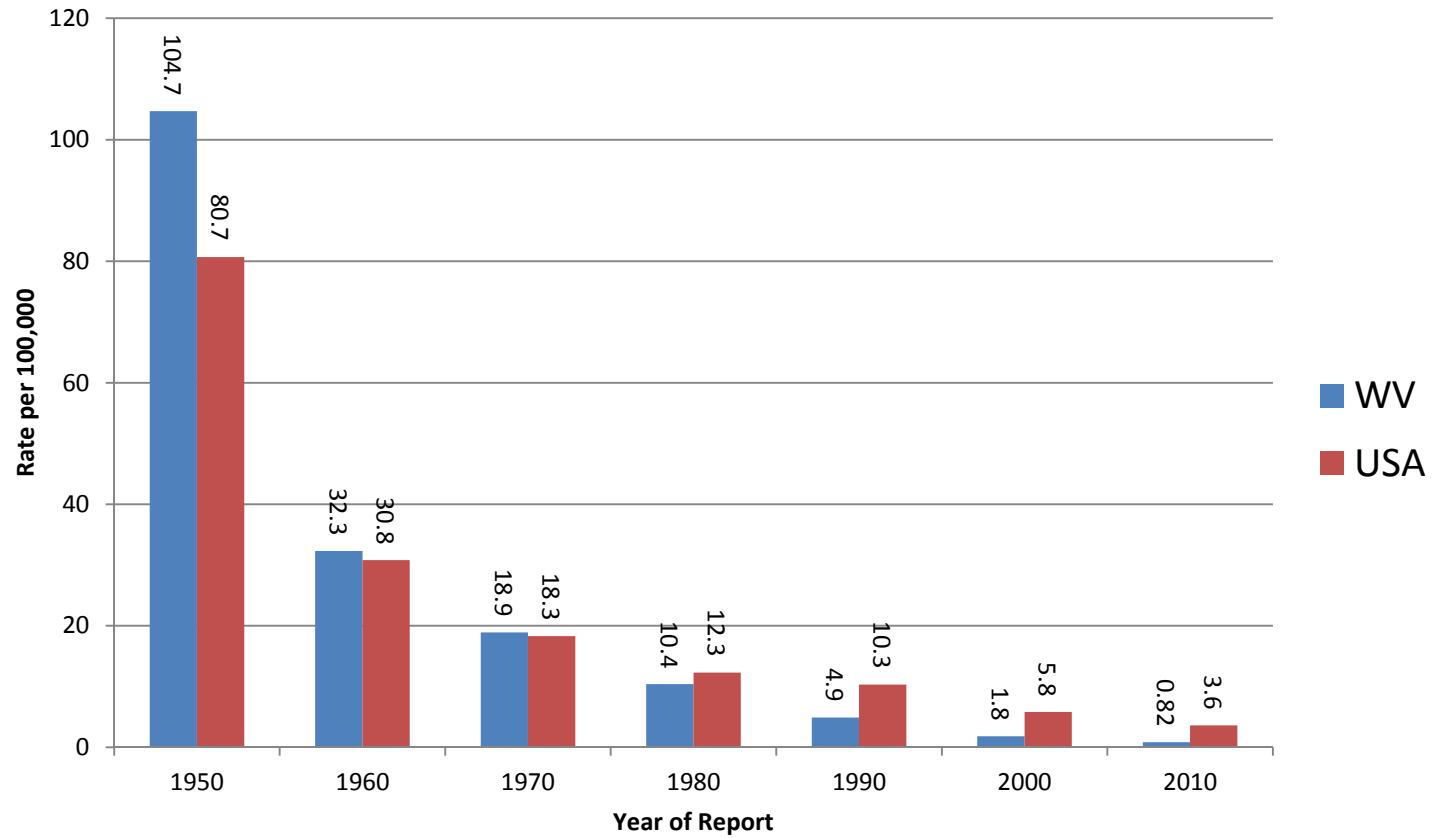
Brice Fortney  
Radiological Technologist

304-455-0920 X247

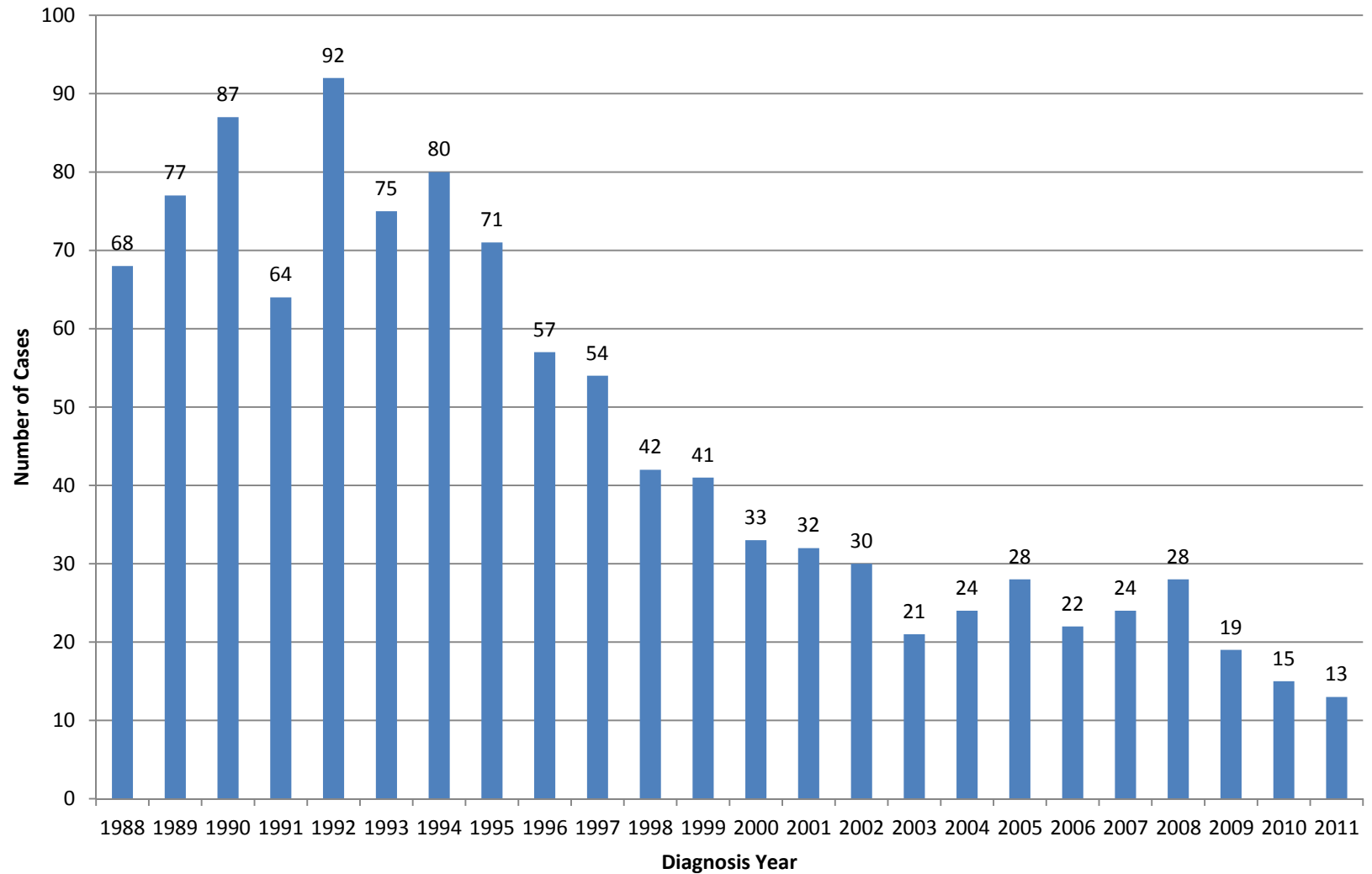


# TB Incidence Rate by Year of Report

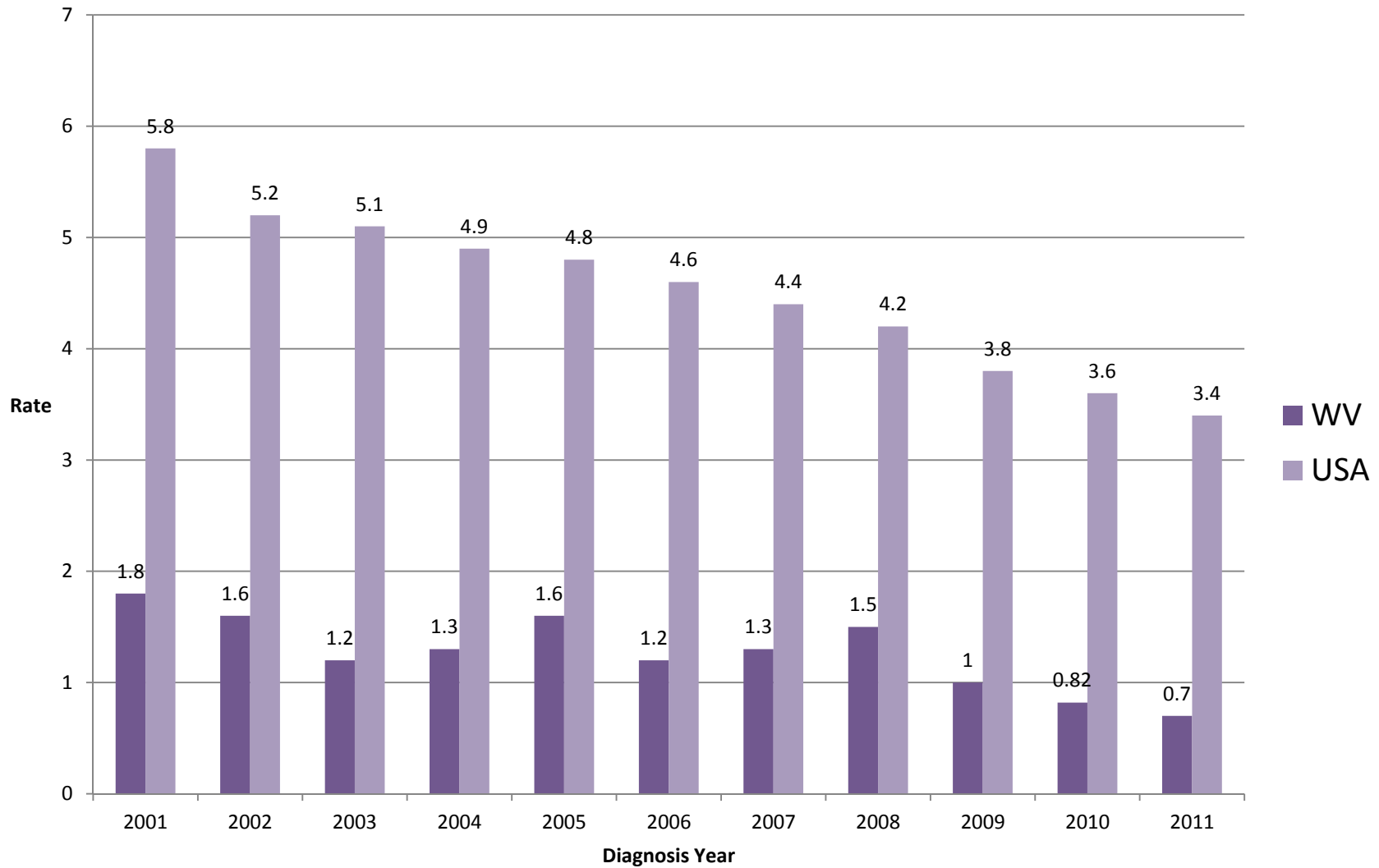
WV and USA Decennial Rates, 1950 - 2010



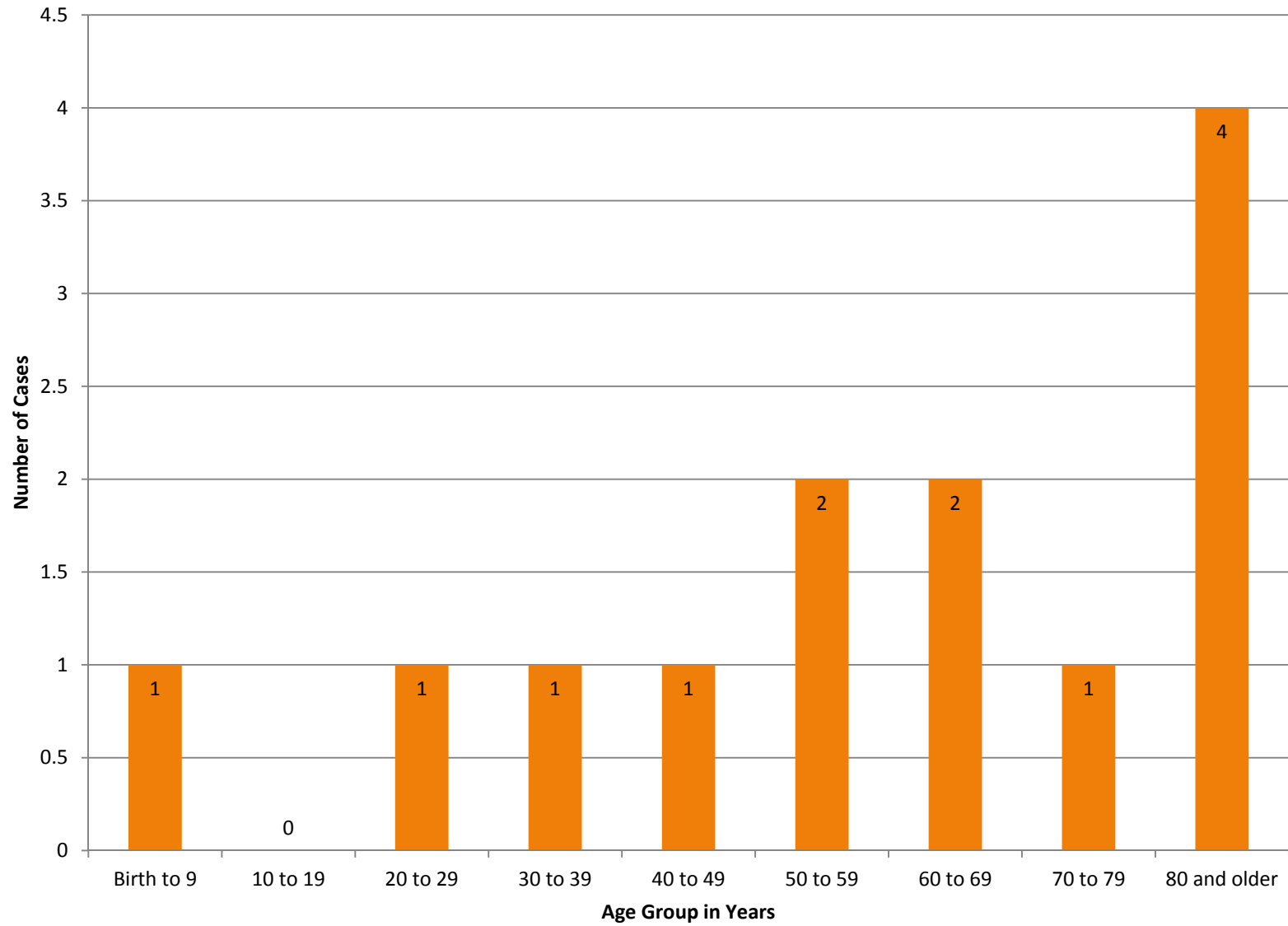
## Number of Newly Diagnosed TB Cases in WV



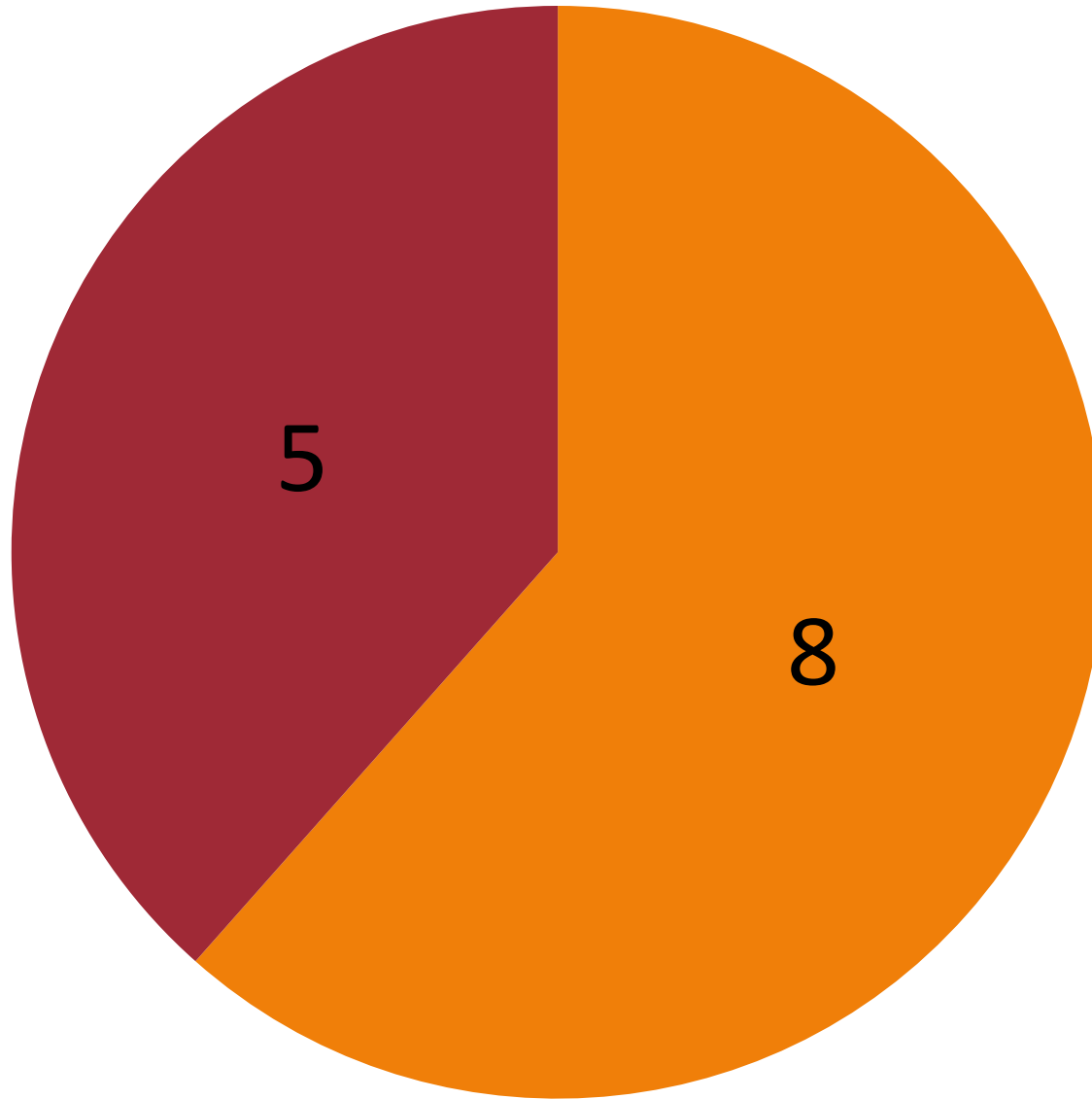
### TB Incidence Rates per 100,000 by Diagnosis Year



## 2011 WV TB Cases: Age Group



### Country of Origin

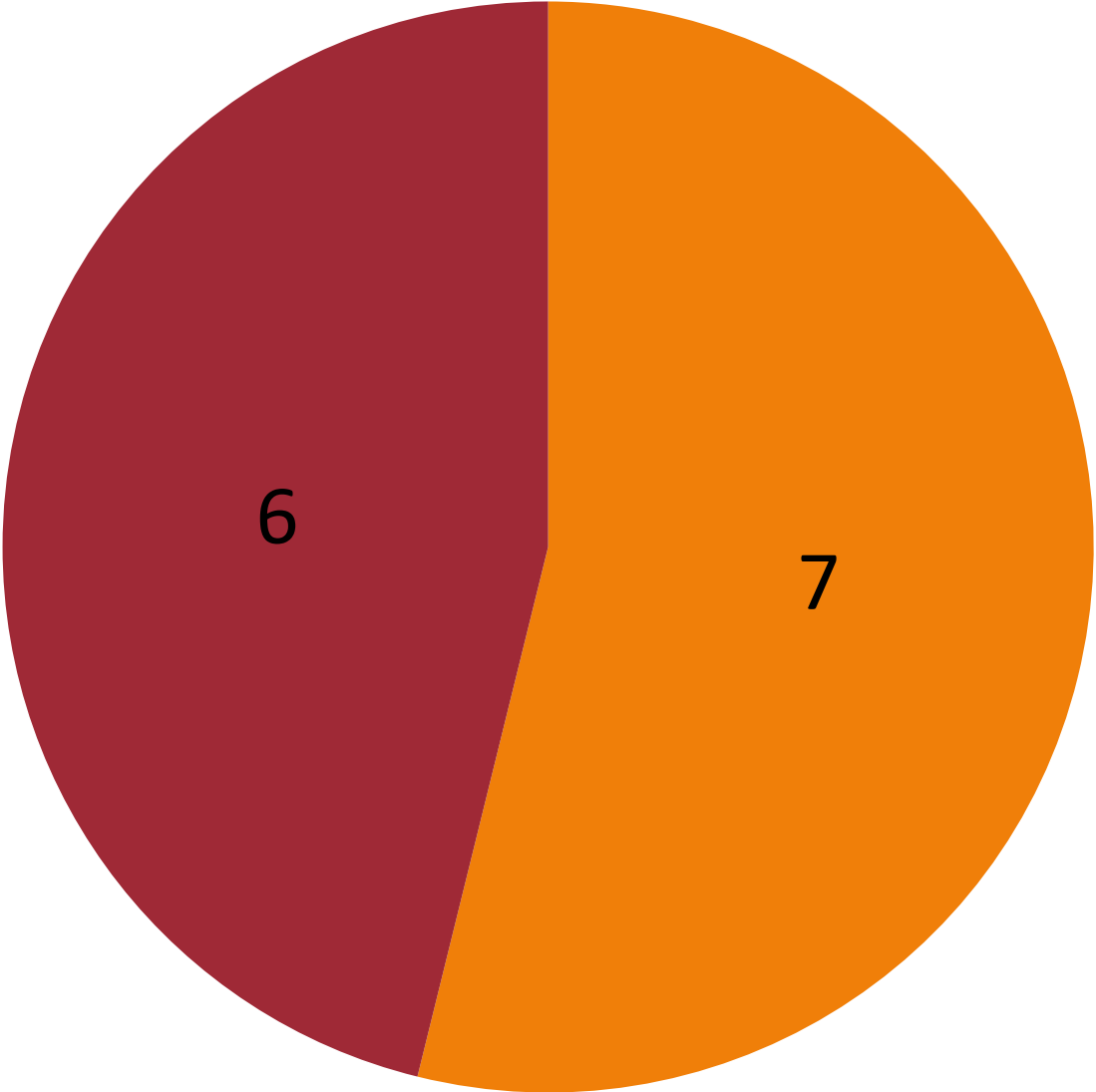


■ US

■ Non-US

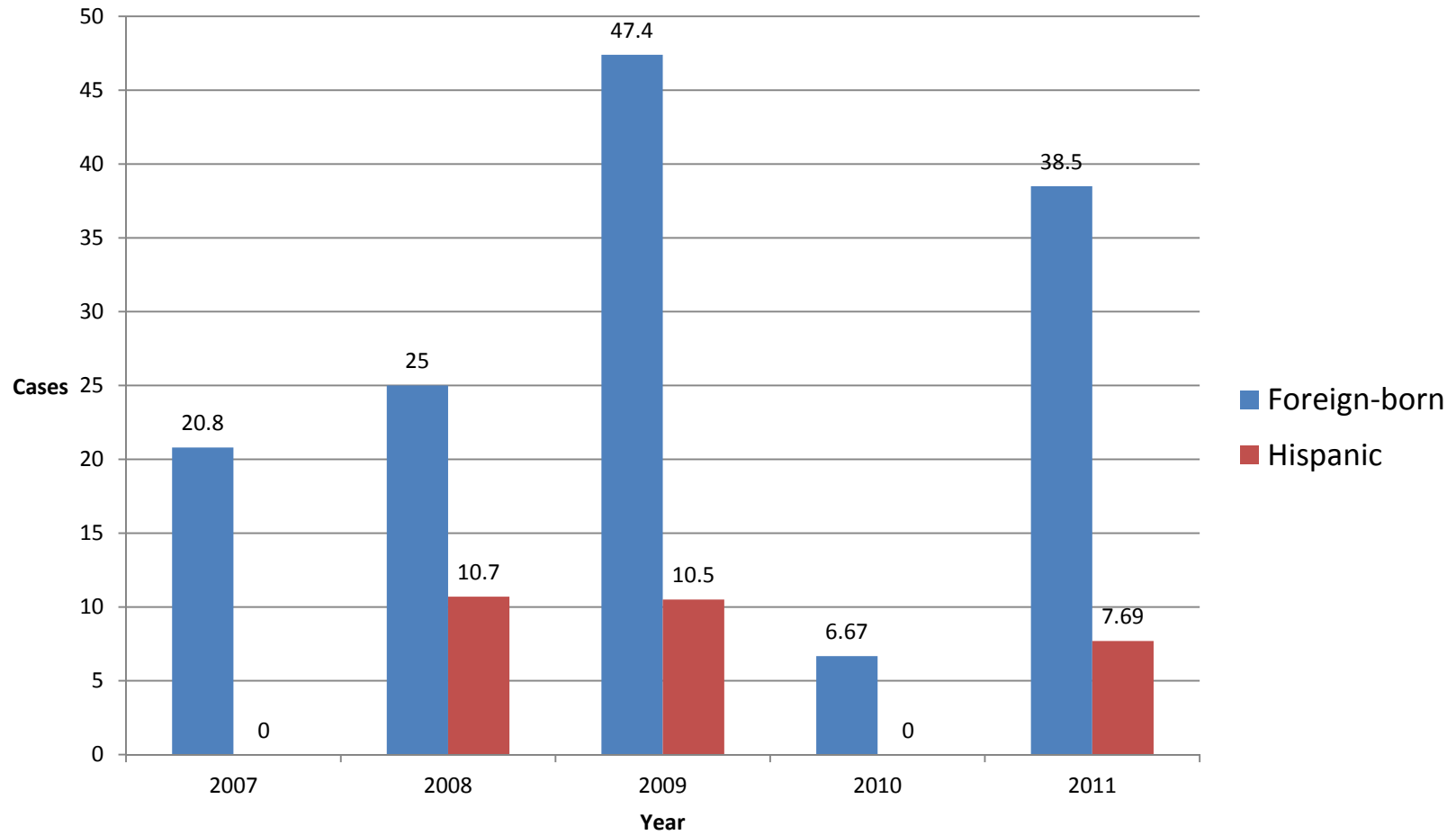


# Gender

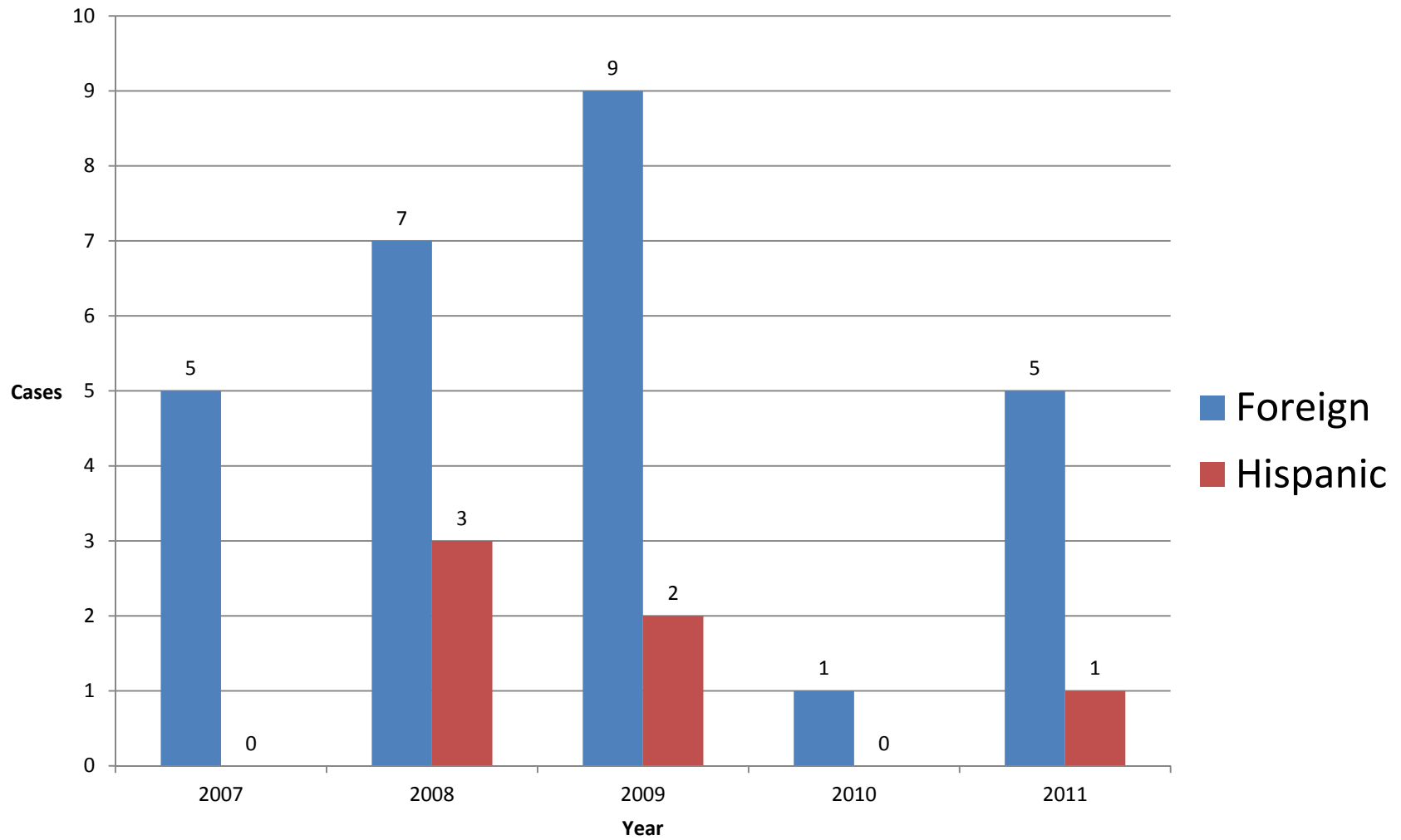


- Male
- Female

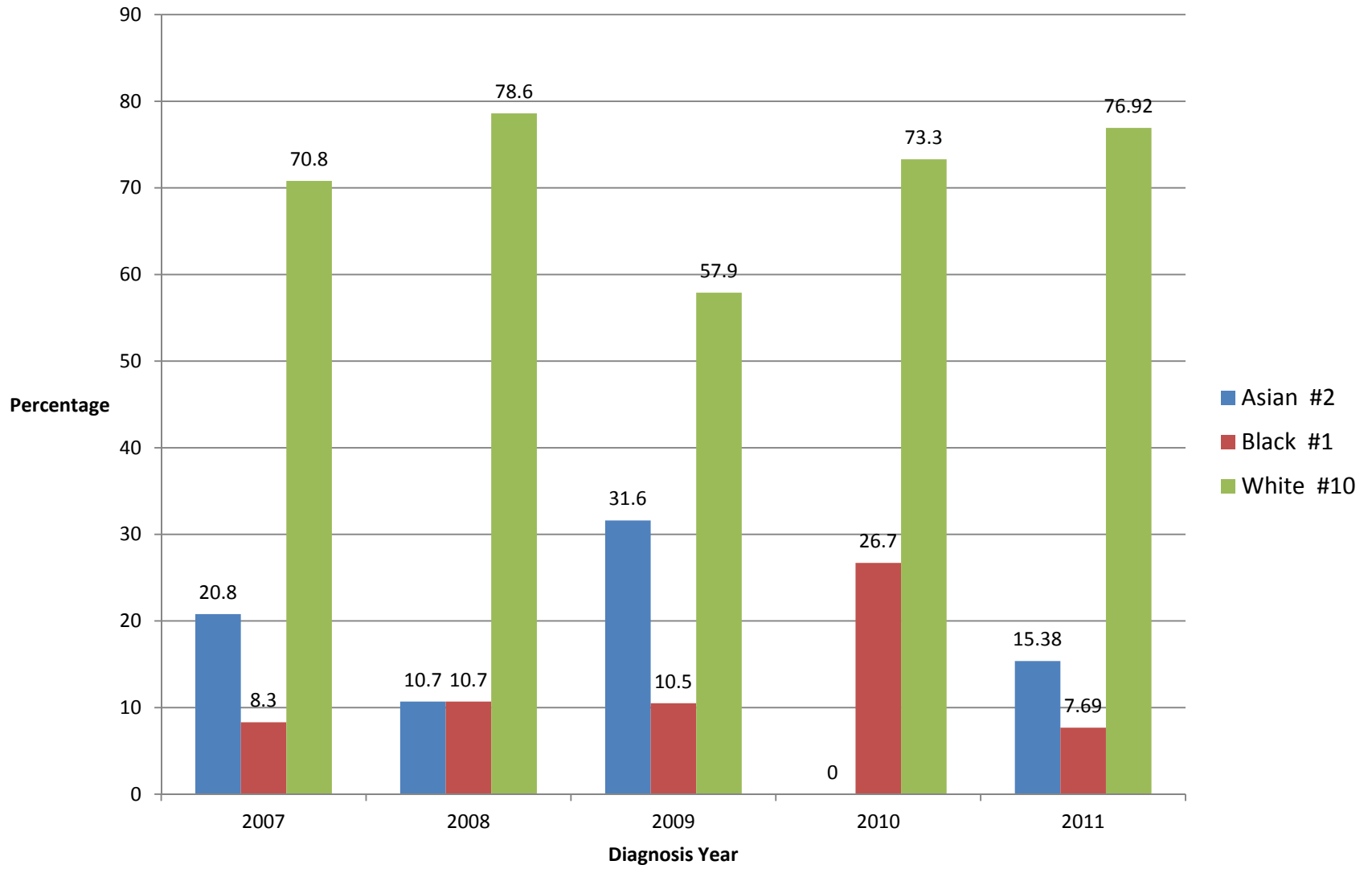
## Percentage of Cases: Foreign-Born vs Hispanic



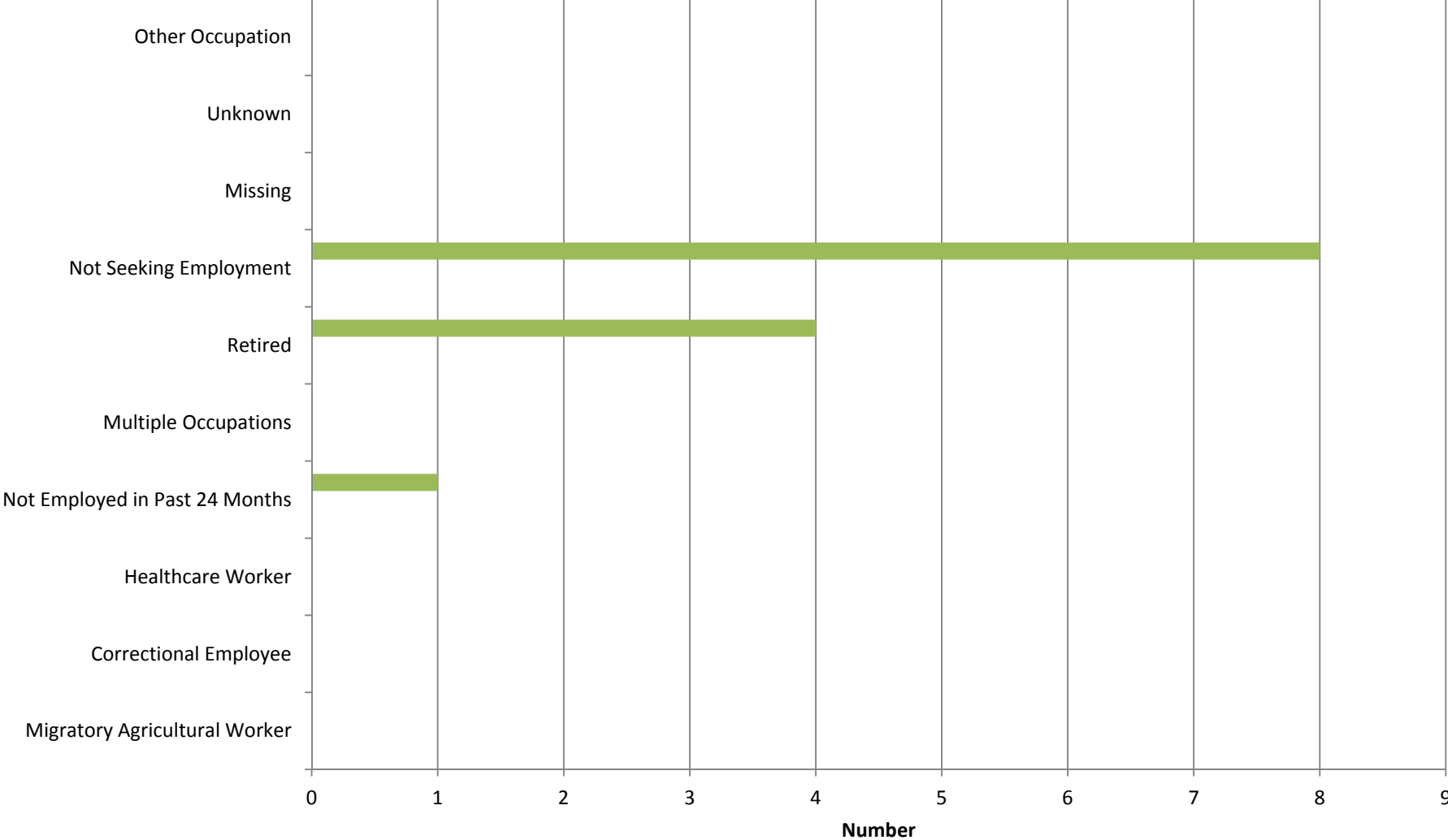
## Number of Cases: Foreign-Born vs Hispanic



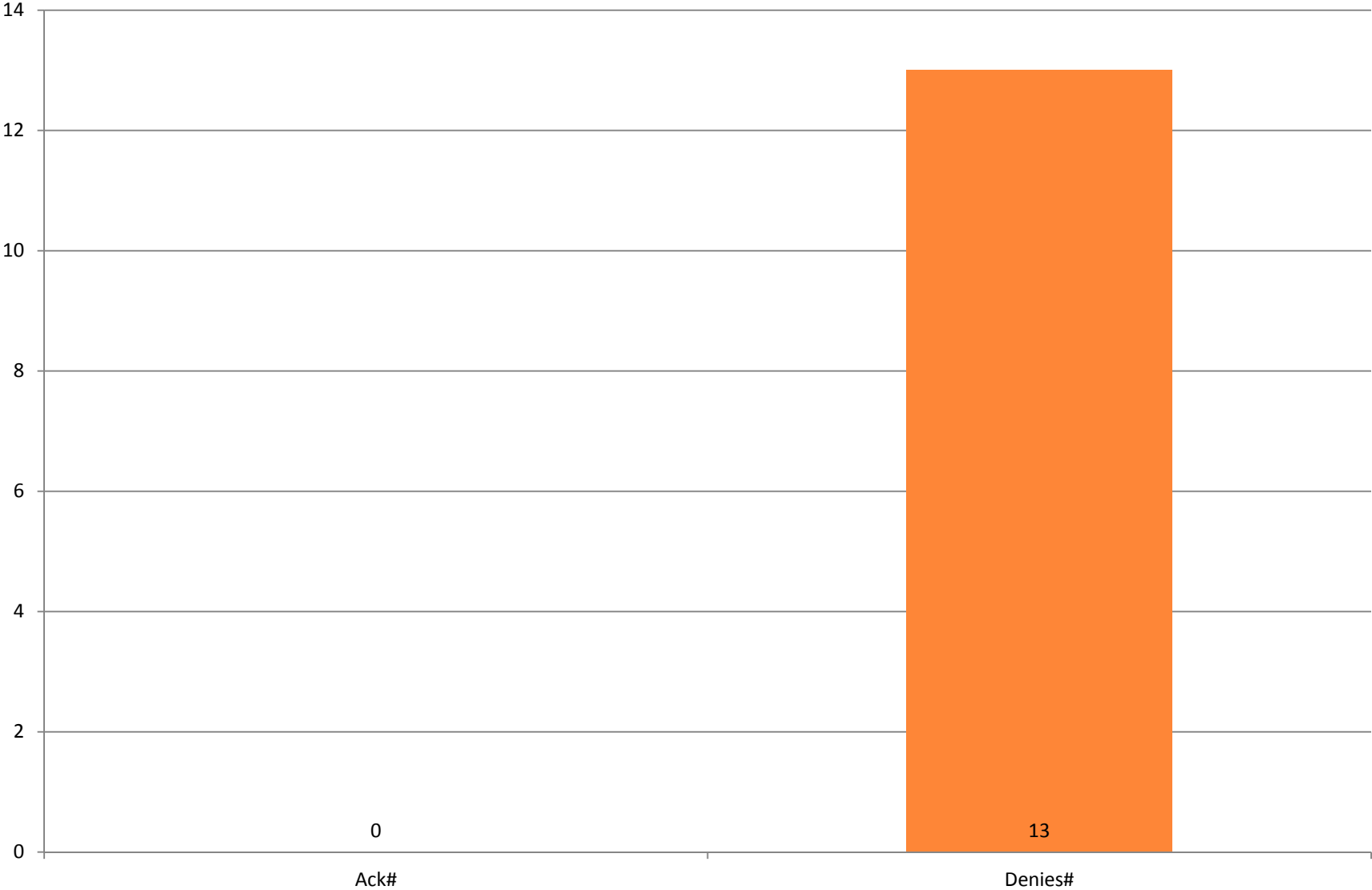
### Race of WV TB Cases by Diagnosis Year



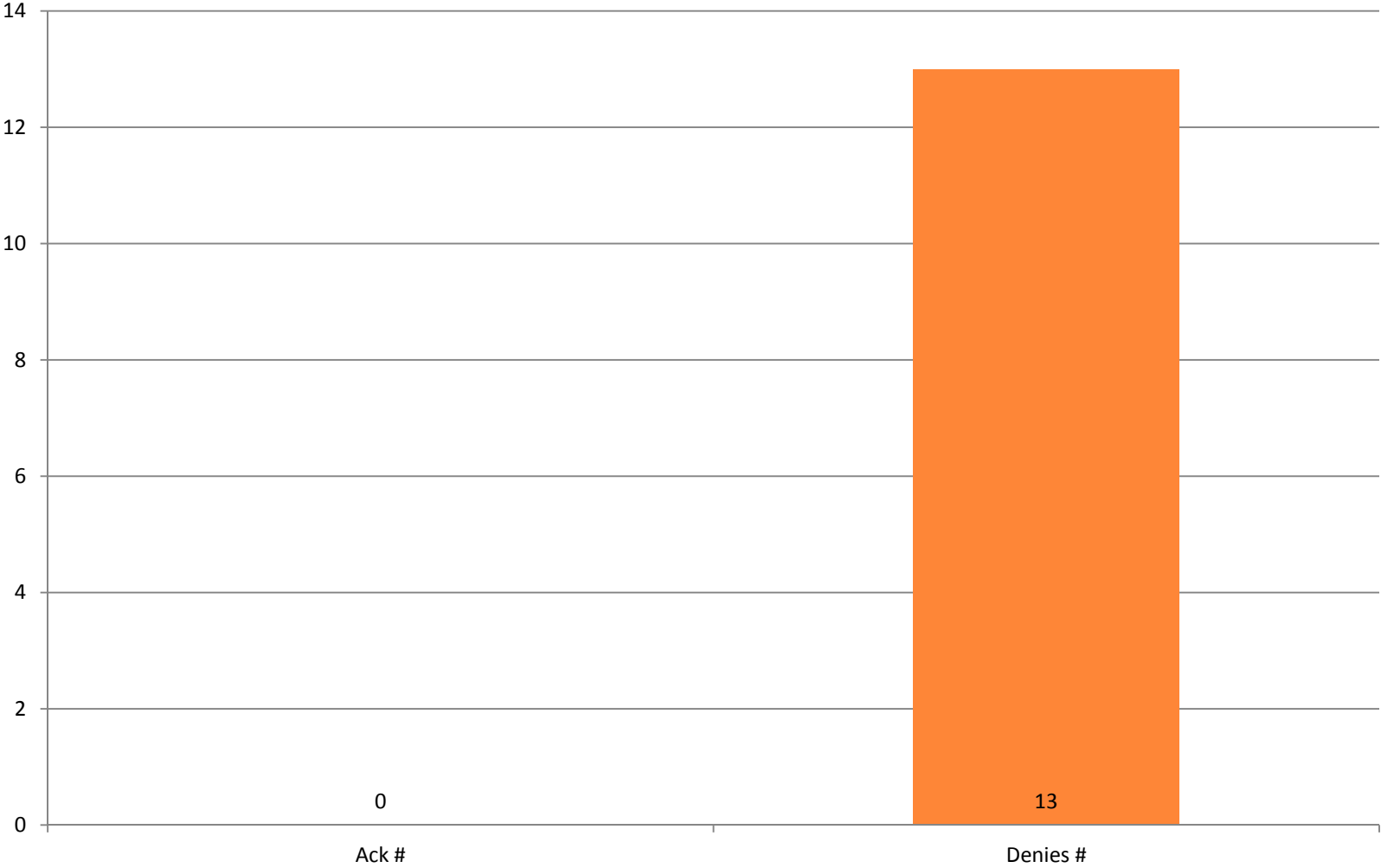
# Employment at Diagnosis



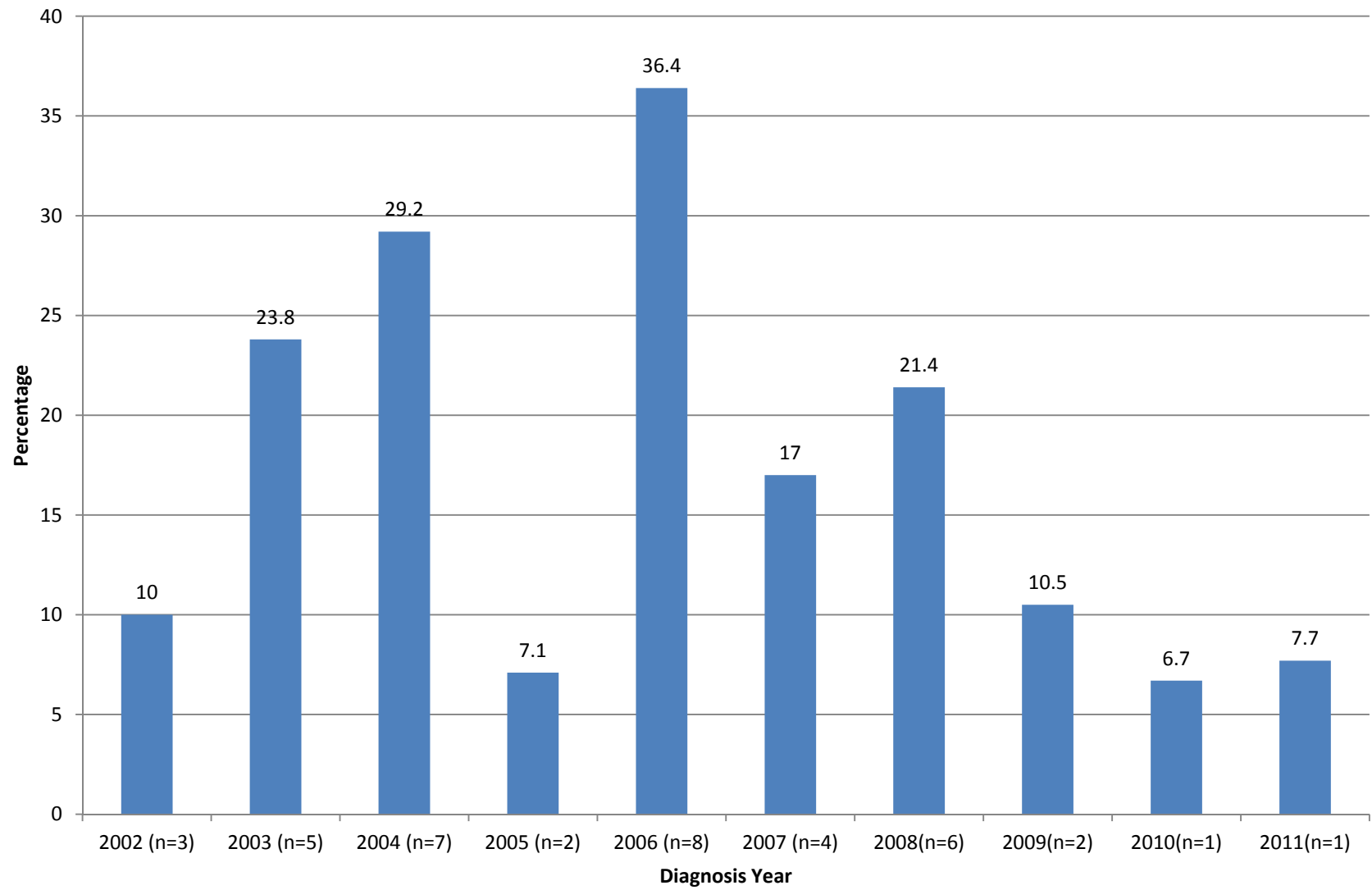
# Injected Drug Use in the Past Year



# Non-Injected Drug Use in the Past Year



### Percentage of WV TB Cases with Reported History of Alcohol Abuse in Past year





**SURVEILLANCE CLINICAL DATA**  
 For the Month-Year Counted  
 Beginning 01/2011 and Ending 12/2011

Reporting Area: West Virginia Bureau for Public Health – All Counties

**STATUS AT DIAGNOSIS OF TB**

<b>CLASSIFICATION</b>	<b>NUMBER OF RECORDS</b>	<b>PERCENT</b>
Alive	12	92.31%
Dead	1	7.69%
Unknown/Missing	0	0.00%
<b>TOTAL</b>	<b>13</b>	<b>100.00%</b>

**PREVIOUS DIAGNOSIS OF TB**

<b>CLASSIFICATION</b>	<b>NUMBER OF RECORDS</b>	<b>PERCENT</b>
No	13	100.00%
Yes	0	0.00%
Unknown/Missing	0	0.00%
<b>TOTAL</b>	<b>13</b>	<b>100.00%</b>

**SITE OF DISEASE**

<b>CLASSIFICATION</b>	<b>NUMBER OF RECORDS</b>	<b>PERCENT</b>
Pulmonary	12	92.31%
Extrapulmonary	1	7.69%
Both	0	0.00%
Site Not Stated/Missing	0	0.00%
<b>TOTAL</b>	<b>13</b>	<b>100.00%</b>

**SPUTUM SMEAR**

<b>CLASSIFICATION</b>	<b>NUMBER OF RECORDS</b>	<b>PERCENT</b>
Positive	4	30.77%
Negative	2	15.39%
Not Done	7	53.85%
Unknown/Missing	0	0.00%
	<b>13</b>	<b>100.00%</b>

**SURVEILLANCE CLINICAL DATA**  
 For the Month-Year Counted  
 Beginning 01/2011 and Ending 12/2011

**SPUTUM CULTURE**

<b>CLASSIFICATION</b>	<b>NUMBER OF RECORDS</b>	<b>PERCENT</b>
Positive	6	46.15%
Negative	0	0.00%
Not Done	7	53.85%
Unknown/Missing	0	0.00%
<b>TOTAL</b>	<b>13</b>	<b>100.00%</b>

**MICROSCOPIC EXAM OF TISSUE AND OTHER BODY FLUIDS**

<b>CLASSIFICATION</b>	<b>NUMBER OF RECORDS</b>	<b>PERCENT</b>
Positive	2	15.39%
Negative	6	46.15%
Not Done	5	38.46%
Unknown/Missing	0	0.00%
<b>TOTAL</b>	<b>13</b>	<b>100.00%</b>

**CULTURE OF TISSUE AND OTHER BODY FLUIDS**

<b>CLASSIFICATION</b>	<b>NUMBER OF RECORDS</b>	<b>PERCENT</b>
Positive	7	53.85%
Negative	1	7.69%
Not Done	5	38.46%
Unknown	0	0.00%
Missing	0	0.00%
<b>TOTAL</b>	<b>13</b>	<b>100.00%</b>

**SURVEILLANCE CLINICAL DATA**  
 For the Month-Year Counted  
 Beginning 01/2011 and Ending 12/2011

**CHEST X-RAY**

<b>CLASSIFICATION</b>	<b>NUMBER OF RECORDS</b>	<b>PERCENT</b>
Normal	2	15.39 %
Abnormal	11	84.62%
Not Done/Unknown/Missing	0	0.00 %
<b>TOTAL</b>	<b>13</b>	<b>100.00%</b>

**TUBERCULIN (MANTOUX) SKIN TEST AT DIAGNOSIS**

<b>CLASSIFICATION</b>	<b>NUMBER OF RECORDS</b>	<b>PERCENT</b>
Positive	4	30.77%
Negative	2	15.39%
Not Done	7	53.85%
Unknown	0	0.00%
Missing	0	0.00%
<b>TOTAL</b>	<b>13</b>	<b>100.00%</b>

**HIV STATUS**

<b>CLASSIFICATION</b>	<b>NUMBER OF RECORDS</b>	<b>PERCENT</b>
Negative	11	84.62 %
Positive	0	0.00%
Indeterminate	0	0.00%
Refused	1	7.69%
Not Offered	1	7.69%
Test Done, Results Unknown	0	7.69%
Unknown	0	0.00%
Missing	0	0.00%
<b>TOTAL</b>	<b>13</b>	<b>100.00%</b>

**SURVEILLANCE CLINICAL DATA**  
For the Month-Year Counted  
Beginning 01/2011 and Ending 12/2011

**INITIAL DRUG REGIMEN**

<b>CLASSIFICATION</b>	<b>NUMBER OF RECORDS</b>	<b>PERCENT</b>
No Drugs	1	7.69%
One Drug	0	0.00%
INH, RIF, PZA, and EMB or SM	11	84.62%
INH, RIF, and PZA	0	0.00 %
INH and RIF	0	0.00 %
Any other multiple drug combination	1	7.69%
Unknown	0	0.00%
<b>TOTAL</b>	<b>13</b>	<b>100.00%</b>

## SURVEILLANCE DEMOGRAPHICS REPORT

For the Month-Year Counted  
Beginning 01/2011 and Ending 12/2011

Reporting Area: West Virginia Bureau for Public Health – All Counties

### ETHNICITY

<u>CLASSIFICATION</u>	<u>NUMBER OF RECORDS</u>	<u>PERCENT</u>
Hispanic or Latino	1	7.69%
Not Hispanic or Latino	12	92.31%
Unknown or Missing	0	0.00%
<b>TOTAL</b>	<b>13</b>	<b>100.00%</b>

### RACE

<u>CLASSIFICATION</u>	<u>NUMBER OF RECORDS</u>	<u>PERCENT</u>
Single Race:		
American Indian or Alaska Native	0	0.00%
Asian	2	15.39%
Black or African-American	1	7.69%
Native Hawaiian or Pacific Islander	0	0.00%
White	10	76.92%
Multiple Races	0	0.00%
Unknown/Missing	0	0.00%
<b>TOTAL</b>	<b>13</b>	<b>100.00%</b>

### SEX

<u>CLASSIFICATION</u>	<u>NUMBER OF RECORDS</u>	<u>PERCENT</u>
Male	7	53.85%
Female	6	46.15%
Unknown/Missing	0	0.00%
<b>TOTAL</b>	<b>13</b>	<b>100.00%</b>

**SURVEILLANCE DEMOGRAPHICS REPORT**  
 For the Month-Year Counted  
 Beginning 01/2011 and Ending 12/2011

**COUNTRY OF ORIGIN**

<b>CLASSIFICATION</b>	<b>NUMBER OF RECORDS</b>	<b>PERCENT</b>
U.S.A.	8	61.54%
Non-U.S.	5	38.46%
Unknown/Missing	0	0.00%
	<b>13</b>	<b>100.00%</b>

**5 YEAR AGE GROUP**

<b>CLASSIFICATION</b>	<b>NUMBER OF RECORDS</b>	<b>PERCENT</b>
0 – 4	1	7.69%
5 – 9	0	0.00%
10 – 14	0	0.00%
15 – 19	0	0.00%
20 – 24	1	7.69%
25 – 29	0	0.00%
30 – 34	0	0.00%
35 – 39	1	7.69%
40 – 44	1	7.69%
45 – 49	0	0.00%
50 – 54	2	15.39%
55 – 59	0	0.00%
60 – 64	2	15.39%
65 – 69	0	0.00%
70 – 74	0	0.00%
75 – 79	1	7.69%
80 – 84	1	7.69%
85 and Older	3	23.08%
Unknown	0	0.00%
<b>TOTAL</b>	<b>13</b>	<b>100.00%</b>

## SURVEILLANCE DEMOGRAPHICS REPORT

For the Month-Year Counted  
Beginning 01/2011 and Ending 12/2011

### 10 YEAR AGE GROUP

<u>CLASSIFICATION</u>	<u>NUMBER OF RECORDS</u>	<u>PERCENT</u>
0 – 9	1	7.69%
10 – 19	0	0.00%
20 – 29	1	7.69%
30 – 39	1	7.69%
40 – 49	1	7.69%
50 – 59	2	15.39%
60 – 69	2	15.39%
70 – 79	1	7.69%
80 and Older	4	30.77%
Unknown	0	0.00%
<b>TOTAL</b>	<b>13</b>	<b>100.00%</b>

### HOMELESS WITHIN PAST YEAR

<u>CLASSIFICATION</u>	<u>NUMBER OF RECORDS</u>	<u>PERCENT</u>
No	13	100.00%
Yes	0	0.00%
Unknown/Missing	0	0.00%
<b>TOTAL</b>	<b>13</b>	<b>100.00%</b>

### RESIDENT OF A CORRECTIONAL FACILITY AT TIME OF DIAGNOSIS

<u>CLASSIFICATION</u>	<u>NUMBER OF RECORDS</u>	<u>PERCENT</u>
No	13	100.00%
Yes	0	0.00%
Unknown/Missing	0	0.00%
<b>TOTAL</b>	<b>13</b>	<b>100.00%</b>

## **SURVEILLANCE DEMOGRAPHICS REPORT**

For the Month-Year Counted  
Beginning 01/2011 and Ending 12/2011

### **RESIDENT OF A LONG-TERM CARE FACILITY AT TIME OF DIAGNOSIS**

<b>CLASSIFICATION</b>	<b>NUMBER OF RECORDS</b>	<b>PERCENT</b>
No	12	92.31%
Yes	1	7.69%
Unknown/Missing	0	0.00%
<b>TOTAL</b>	<b>13</b>	<b>100.00%</b>

### **INJECTED DRUG USE WITHIIN PAST YEAR**

<b>CLASSIFICATION</b>	<b>NUMBER OF RECORDS</b>	<b>PERCENT</b>
No	13	100.00%
Yes	0	0.00%
Unknown/Missing	0	0.00%
<b>TOTAL</b>	<b>13</b>	<b>100.00%</b>

### **NON-INJECTED DRUG USE WITHIN PAST YEAR**

<b>CLASSIFICATION</b>	<b>NUMBER OF RECORDS</b>	<b>PERCENT</b>
No	13	100.00 %
Yes	0	0.00%
Unknown/Missing	0	0.00 %
<b>TOTAL</b>	<b>13</b>	<b>100.00%</b>

### **EXCESS ALCOHOL USE WITHIN PAST YEAR**

<b>CLASSIFICATION</b>	<b>NUMBER OF RECORDS</b>	<b>PERCENT</b>
No	12	92.31%
Yes	1	7.69%
Unknown/Missing	0	0.00%
<b>TOTAL</b>	<b>13</b>	<b>100.00%</b>



## SURVEILLANCE DEMOGRAPHICS REPORT

For the Month-Year Counted  
Beginning 01/2011 and Ending 12/2011

### OCCUPATION

<b>CLASSIFICATION</b>	<b>NUMBER OF RECORDS</b>	<b>PERCENT</b>
Health Care Worker	0	0.00%
Correctional Employee	0	0.00%
Migratory Agricultural Worker	0	0.00%
Other Occupation	0	0.00%
Retired	4	30.77%
Not Seeking Employment (e.g. student, etc.)	8	61.54%
Not Employed Within Past 24 Months	1	7.69%
<u>Unknown/Missing</u>	0	0.00%
<b>TOTAL</b>	<b>13</b>	<b>100.00%</b>

**NEWLY REPORTED VERIFIED CASES OF TUBERCULOSIS IN WEST VIRGINIA**

COUNTY	CENSUS 2010	2006	2007	2008	2009	2010	2011	2011 I-RATE
Barbour	16,589	2	0	1	0	0	0	0
Berkeley	104,169	0	3	5	0	1	1	0.96
Boone	24,629	0	0	0	0	0	0	0
Braxton	14,523	0	0	0	0	0	0	0
Brooke	24,069	1	0	1	0	0	0	0
Cabell	96,319	1	0	4	3	0	2	0.5
Calhoun	7,627	0	0	0	0	0	0	0
Clay	9,386	1	0	0	0	0	0	0
Doddridge	8,202	0	0	0	0	0	0	0
Fayette	46,039	0	2	1	0	0	0	0
Gilmer	8,693	0	0	0	2	3	0	0
Grant	11,937	0	0	0	0	0	0	0
Greenbrier	35,480	1	1	0	0	0	0	0
Hampshire	23,964	0	0	0	0	0	0	0
Hancock	30,676	1	0	0	0	0	0	0
Hardy	14,025	0	0	0	0	0	1	7.13
Harrison	69,099	0	1	0	0	0	1	1.45
Jackson	29,211	0	0	0	0	0	0	0
Jefferson	53,498	2	0	1	0	0	1	1.87
Kanawha	193,063	0	2	2	2	1	0	0
Lewis	16,372	0	1	0	0	0	0	0
Lincoln	21,270	0	0	0	0	0	0	0
Logan	36,743	1	0	0	0	2	0	0
Marion	56,418	1	0	0	0	0	0	0
Marshall	33,107	0	0	0	0	1	0	0
Mason	27,324	0	0	0	1	0	0	0
McDowell	22,113	0	2	1	2	0	1	4.52
Mercer	62,264	0	0	0	2	0	1	1.61
Mineral	28,212	0	0	0	1	0	0	0
Mingo	26,839	0	2	0	0	1	0	0
Monongalia	96,189	3	2	1	2	2	1	1.04
Monroe	13,502	1	0	0	0	0	0	0
Morgan	17,541	0	1	1	0	0	0	0
Nicholas	26,233	0	0	0	0	1	0	0
Ohio	44,443	1	0	1	1	0	0	0
Pendleton	7,695	1	0	0	0	0	0	0
Pleasants	7,605	0	1	0	0	0	0	0
Pocahontas	8,719	0	0	1	0	0	0	0
Preston	33,520	0	0	0	0	1	0	0

COUNTY	CENSUS 2010	2006	2007	2008	2009	2010	2011	2011 I-RATE
Putnam	55,486	1	1	1	1	0	2	3.6
Raleigh	78,859	1	1	4	1	0	1	1.27
Randolph	29,405	0	0	0	0	1	0	0
Ritchie	10,449	1	0	0	0	0	0	0
Roane	14,926	1	0	0	0	0	0	0
Summers	13,927	0	0	0	0	0	0	0
Taylor	16,895	0	0	0	0	0	0	0
Tucker	7,141	0	1	0	0	0	0	0
Tyler	9,208	0	0	0	0	0	0	0
Upshur	24,254	0	0	0	0	0	0	0
Wayne	42,481	0	1	0	0	1	1	2.35
Webster	7,154	0	0	0	0	0	0	0
Wetzel	16,583	0	0	0	1	0	0	0
Wirt	5,717	0	0	0	0	0	0	0
Wood	86,956	0	2	2	0	0	0	0
Wyoming	23,796	1	0	1	0	0	0	0
<b>TOTAL</b>	1,852,994	22	24	28	19	15	13	0.7
<b>I-Rate for WV</b>		1.2	1.3	1.5	1	0.82	0.7	
<b># Counties with TB Cases</b>		18	16	15	12	11	11	

**Latent Tuberculosis Infection and LTBI Incidence/100,000 Population by County**

County	Population 2010 Census	2007 LTBI	2007 Rate	2008 LTBI	2008 Rate	2009 LTBI	2009 Rate	2010 LTBI	2010 Rate	2011 LTBI	2011 Rate
Barbour	16,589	10	64.3	3	19.3	2	12.85	5	31.73	4	24.11
Berkeley	104,169	17	22.3	29	38.2	30	39.52	19	18.29	15	14.4
Boone	24,629	0	0	0	0	3	11.74	0	0	6	24.36
Braxton	14,523	6	40.8	0	0	0	0	0	0	0	0
Brooke	24,069	2	7.9	1	3.9	0	0	0	0	1	4.15
Cabell	96,319	47	48.6	48	49.6	53	54.76	41	43.06	75	77.87
Calhoun	7,627	2	26.4	1	13.2	0	0	0	0	0	0
Clay	9,386	0	0	1	9.7	2	19.36	0	0	0	0
Doddridge	8,202	3	40.5	5	67.54	1	13.5	3	41.66	0	0
Fayette	46,039	6	12.6	1	2.1	1	2.1	1	2.17	0	0
Gilmer	8,693	0	0	0	0	0	0	0	0	0	0
Grant	11,937	4	35.4	13	115.1	10	88.5	1	8.45	0	0
Greenbrier	35,480	5	14.5	24	69.7	5	14.51	8	23.17	0	0
Hampshire	23,964	4	19.8	4	19.8	3	14.84	0	0	1	4.17
Hancock	30,676	1	3.1	0	0	0	0	0	0	1	3.26
Hardy	14,025	7	55.3	6	47.4	6	47.35	7	51.43	9	64.17
Harrison	69,099	37	53.9	16	23.3	16	23.3	4	5.8	11	15.92
Jackson	29,211	9	32.1	3	10.7	6	21.42	2	7.13	0	0
Jefferson	53,498	88	208.6	37	87.7	58	137.47	56	106.16	32	59.82
Kanawha	193,063	9	4.5	31	15.5	22	10.99	39	20.35	6	3.11
Lewis	16,372	1	5.9			0	0	4	23	0	0
Lincoln	21,720	0	0	0	0	1	4.52	0	0	0	0
Logan	36,743	7	18.6	9	23.9	13	34.47	13	36.62	7	19.05
Marion	56,418	2	3.5	1	1.8	6	10.6	11	19.4	2	3.54
Marshall	33,107	4	11.3	0	0	1	2.81	5	15.36	2	6.04
Mason	27,324	4	11.1	0	0	0	0	0	0	4	14.64
McDowell	22,113	2	7.3	1	3.7	1	3.65	1	4.46	0	0
Mercer	62,264	21	33.3	13	20.6	16	25.4	18	29.07	22	35.33
Mineral	28,212	0	0	1	3.7	5	18.46	0	0	0	0
Mingo	26,839	5	17.7	1	3.5	3	10.61	2	7.58	3	11.18
Monongalia	96,189	10	12.2	7	8.6	5	6.1	10	11.1	12	12.48
Monroe	13,502	5	1.4	5	34.3	0	0	8	58.33	2	14.81
Morgan	17,541	0	0	1	6.7	0	0	0	0	0	0
Nicholas	26,233	0	0	1	3.8	1	3.76	1	3.81	0	0
Ohio	44,443	1	2.1		6.3	2	4.21	5	11.36	5	11.25
Pendleton	7,695	1	12.2	2	24.4	1	12.2	0	0	0	0
Pleasants	7,605	0	0	1	13.3	1	13.3	0	0	0	0
Pocahontas	8,719	17	186.2	6	65.7	1	10.95	1	11.88	0	0
Preston	33,520	0	0	1	3.4	0	0	0	0	0	0
Putnam	55,486	2	3.9	10	19.4	3	5.81	16	28.74	11	19.82
Raleigh	78,859	13	16.4	15	18.9	68	85.83	78	98.5	40	50.72
Randolph	29,405	5	17.7	2	7.1	1	3.53	5	17.61	4	13.6
Rtichie	10,449	0	0	0	0	0	0	0	0	0	0
Roane	14,926	1	6.5	1	6.5	0	0	0	0	0	0
Summers	13,927	4	30.8	0	0	0	0	1	7.64	2	14.36
Taylor	16,895	7	43.5	4	24.9	3	18.64	12	73.49	0	0
Tucker	7,141	6	82	0	0	0	0	1	14.68	3	42.01
Upshur	24,254	0	0			2	8.54	0	0	0	0
Wayne	42,481	0	0	0	0	1	2.33	6	14.59	1	2.35
Webster	7,154	0	0	1	10.3	0	0	0	0	0	0
Wetzel-Tyler	25,791	0	0	0	0	1	5.65	2	8.03	0	0
Wirt	5,717	0	0	0	0	0	0	0	0	0	0
Wood	86,956	6	6.8	3	3.4	3	3.4	2	2.3	6	6.9
Wyoming	23,796	3	11.7	0	0	0	0	0	0	1	4.2
<b>TOTALS</b>	<b>1,852,994</b>	<b>384</b>	<b>21.2</b>	<b>312</b>	<b>17.3</b>	<b>357</b>	<b>19.74</b>	<b>388</b>	<b>21.32</b>	<b>288</b>	<b>15.54</b>

**MONTHLY TUBERCULIN TESTING - 2011**

Counties	CONTACTS			Targeted Testing (High Risk)									Administration			Total Tested & Read	Total Positive	% Positive
				Medical Risk			Population Risk											
	# Tests Given	# Tests Read	# Tests Positive	# Tests Given	# Tests Read	# Tests Positive	Foreign Born			Other Pop. Risk								
							# Tests Given	# Tests Read	# Tests Positive	# Tests Given	# Tests Read	# Tests Positive	# Tests Given	# Tests Read	# Tests Positive			
Barbour	1	1	0	9	8	1	4	4	1	24	19	1	240	232	1	264	4	0.02
Berkeley	8	7	3	39	36	0	107	103	7	650	560	4	1209	1129	1	1835	15	0.01
Boone	0	0	0	1	1	0	0	0	0	4	4	0	551	400	6	405	6	0.02
Braxton	0	0	0	18	18	0	0	0	0	0	0	0	185	175	0	193	0	0.00
Brooke	0	0	0	3	3	0	35	35	0	298	294	1	30	18	0	350	1	0.01
Cabell	297	282	13	72	66	4	27	25	10	2570	2313	22	1545	1442	26	4128	75	0.02
Calhoun	0	0	0	0	0	0	0	0	0	16	12	0	0	0	0	12	0	0.00
Clay	0	0	0	0	0	0	0	0	0	0	0	0	96	78	0	78	0	0.00
Doddridge	0	0	0	0	0	0	0	0	0	0	0	0	263	254	0	254	0	0.00
Fayette	1	1	0	6	6	0	2	2	0	0	0	0	314	305	0	314	0	0.00
Gilmer	0	0	0	0	0	0	0	0	0	0	0	0	129	122	0	122	0	0.00
Grant	1	1	0	2	2	0	0	0	0	6	6	0	238	208	0	217	0	0.00
Greenbrier	1	1	0	14	12	0	4	3	0	443	405	0	281	267	0	688	0	0.00
Hampshire	0	0	0	0	0	0	0	0	0	311	294	1	246	236	0	530	1	0.01
Hancock	3	3	0	12	11	0	0	0	0	3	3	0	324	295	1	312	1	0.01
Hardy	36	31	0	0	0	0	0	0	0	20	20	7	334	309	2	360	9	0.03
Harrison	133	121	4	0	0	0	6	6	1	1011	956	6	0	0	0	1083	11	0.01
Jackson	0	0	0	40	37	0	0	0	0	110	98	0	384	366	0	501	0	0.00
Jefferson	3	3	0	106	104	14	45	45	2	130	126	3	714	676	13	954	32	0.04
Kanawha	12	11	0	86	77	0	73	34	3	849	701	2	1476	1200	1	2023	6	0.01
Lewis	0	0	0	0	0	0	0	0	0	0	0	0	242	227	0	227	0	0.00
Lincoln	0	0	0	0	0	0	0	0	0	0	0	0	277	262	0	262	0	0.00
Logan	2	2	1	161	143	0	52	47	2	593	525	4	231	208	0	925	7	0.01
Marion	0	0	0	5	5	0	3	2	1	209	181	1	516	379	0	567	2	0.01
Marshall	35	35	0	1	0	0	0	0	0	3033	1524	0	424	396	2	1955	2	0.01
Mason	0	0	0	34	32	0	1	1	0	157	145	1	423	413	3	591	4	0.01
McDowell	0	0	0	0	0	0	0	0	0	0	0	0	256	106	0	106	0	0.00
Mercer	53	53	4	0	0	0	2	2	2	62	67	5	464	460	11	582	22	0.04
Mineral	0	0	0	1	1	0	0	0	0	0	0	0	464	440	0	441	0	0.00
Mingo	4	4	0	27	20	1	1	1	0	189	126	1	485	373	1	524	3	0.01



STATISTICAL INFORMATION  
TUBERCULOSIS IN WEST VIRGINIA AND THE USA

<u>YEAR</u>	<u>#WV CASES</u>	<u>WV RATE</u>	<u># USA CASES</u>	<u>USA RATE</u>
2011	13	.70	10,521	3.4
2010	15	.82	11,181	3.6
2009	19	1.0	11,540	3.8
2008	28	1.5	12,898	4.2
2007	24	1.3	13,293	4.4
2006	22	1.2	13,779	4.6
2005	28	1.6	14,093	4.8
2004	24	1.3	14,511	4.9
2003	21	1.2	14,874	5.1
2002	30	1.7	15,075	5.2
2001	32	1.8	15,989	5.6
2000	33	1.8	16,377	5.8
1999	41	2.3	17,531	6.4
1998	42	2.3	18,361	6.8
1997	54	3.0	19,851	7.4
1996	57	3.2	21,337	8.0
1995	71	3.9	22,860	8.7
1994	80	4.4	24,361	9.4
1993	75	4.1	25,287	9.8
1992	92	5.1	26,673	10.5

STATISTICAL INFORMATION: TB IN WV AND THE USA  
PAGE 2

<u>YEAR</u>	<u>#WV CASES</u>	<u>WV RATE</u>	<u>#USA CASES</u>	<u>USA RATE</u>
1991	64	3.6	26,283	10.4
1990	87	4.9	25,701	10.3
1989	77	4.1	23,495	9.5
1988	68	3.6	22,436	9.2
1987	99	5.2	22,517	9.3
1986	124	6.5	22,768	9.5
1985	108	5.6	22,201	9.3
1984	133	6.8	22,255	9.4
1983	133	6.8	23,846	10.2
1982	162	8.3	25,520	11.0
1981	181	9.3	27,373	11.9
1980	203	10.4	27,749	12.2
1979	221	11.8	27,669	12.3
1978	216	11.6	28,521	12.8
1977	239	12.9	30,145	13.7



**TB DRUG RESISTANCE IN WV  
1994 TO 2011**

<u>YEAR</u>	<u>MONO</u>	<u>MDR</u>	<u>2 OTHER</u>
2011	1	0	0
2010	1	0	1
2009	3	0	0
2008	0	0	0
2007	1	0	1
2006	2	0	0
2005	3	0	0
2004	3	0	0
2003	0	0	1
2002	2	0	1
2001	5	0	0
2000	4	0	2
1999	2	0	2
1998	3	0	0
1997	3	0	0
1996	3	0	0
1995	1	0	1
1994	5	0	0